







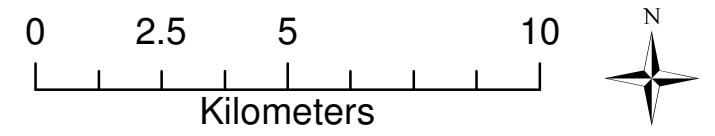
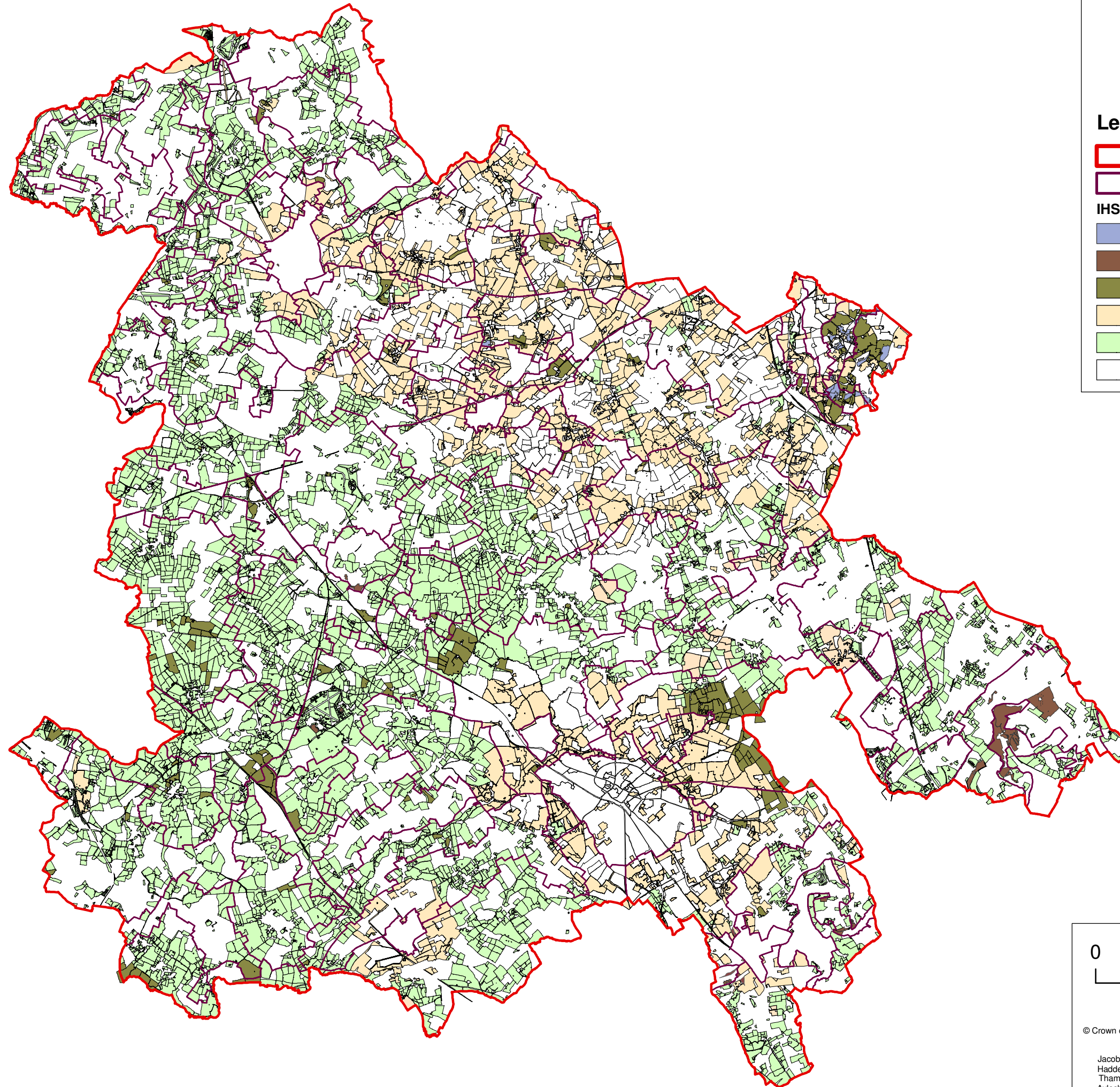


Plan 3B: BIODIVERSITY Integrated Habitat Survey - Grasslands Only

Legend

-  District boundary
-  Landscape Character Areas
- IHS Habitat**
-  Grassland - acid
-  Grassland - calcareous
-  Grassland - neutral
-  Grassland - improved
-  Grassland - unclassified
-  Other habitats (see Plan 3A)



© Crown copyright. All rights reserved. Buckinghamshire County Council 100021529 [2008].

Jacobs UK Ltd, Park House,
Haddenham Business Park,
Thame Road, Haddenham,
Aylesbury, Bucks. HP17 8LB
Telephone (01844) 296200
FAX (01844) 296201

