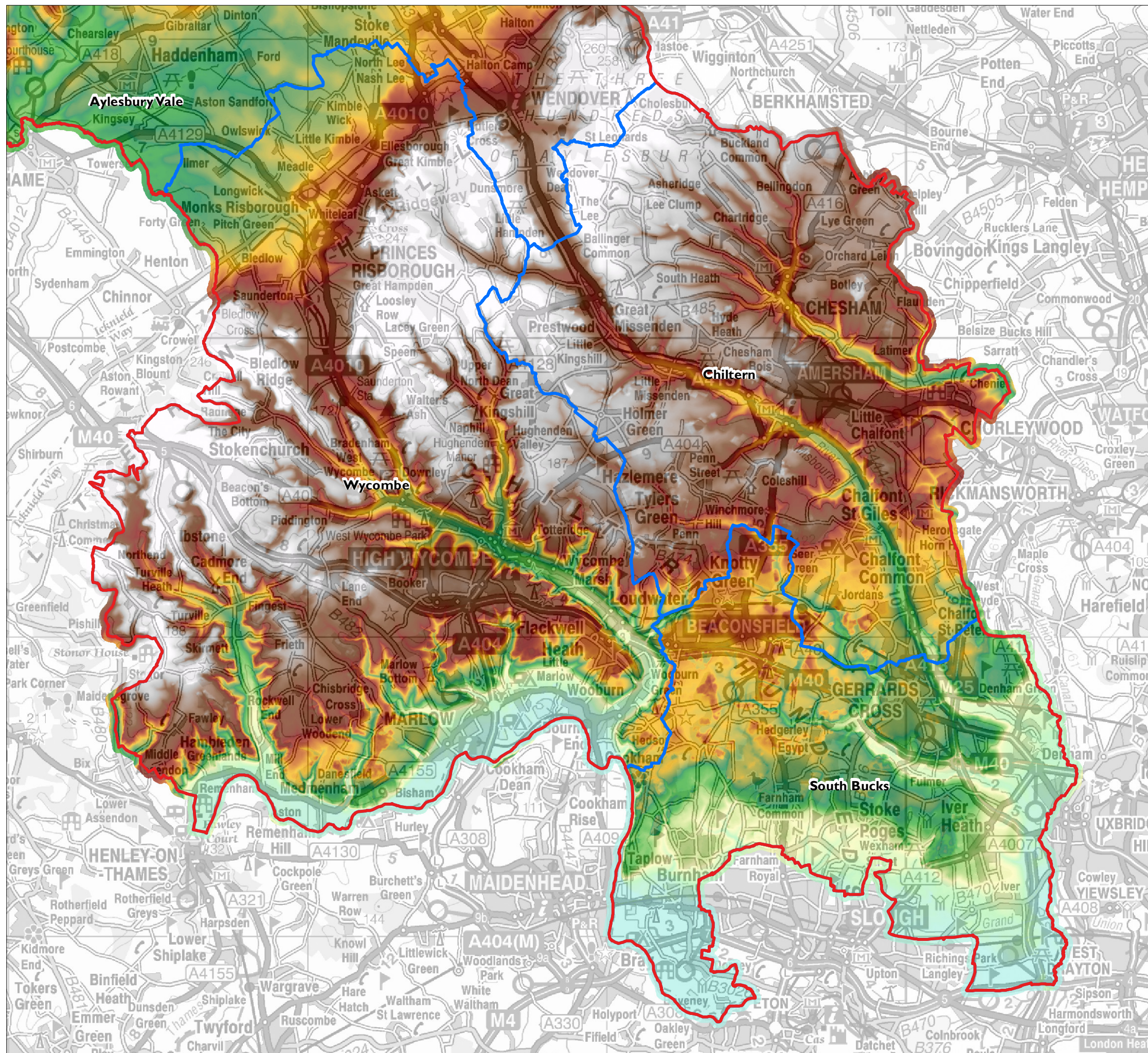


# **Appendix I**

## **Baseline Data Maps**

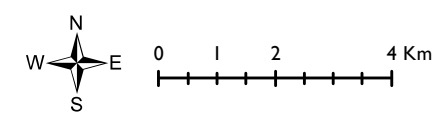
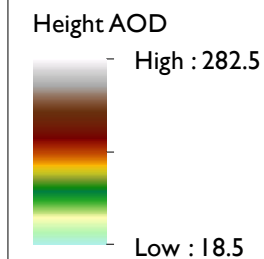




**Figure a: Landform**

**Key**

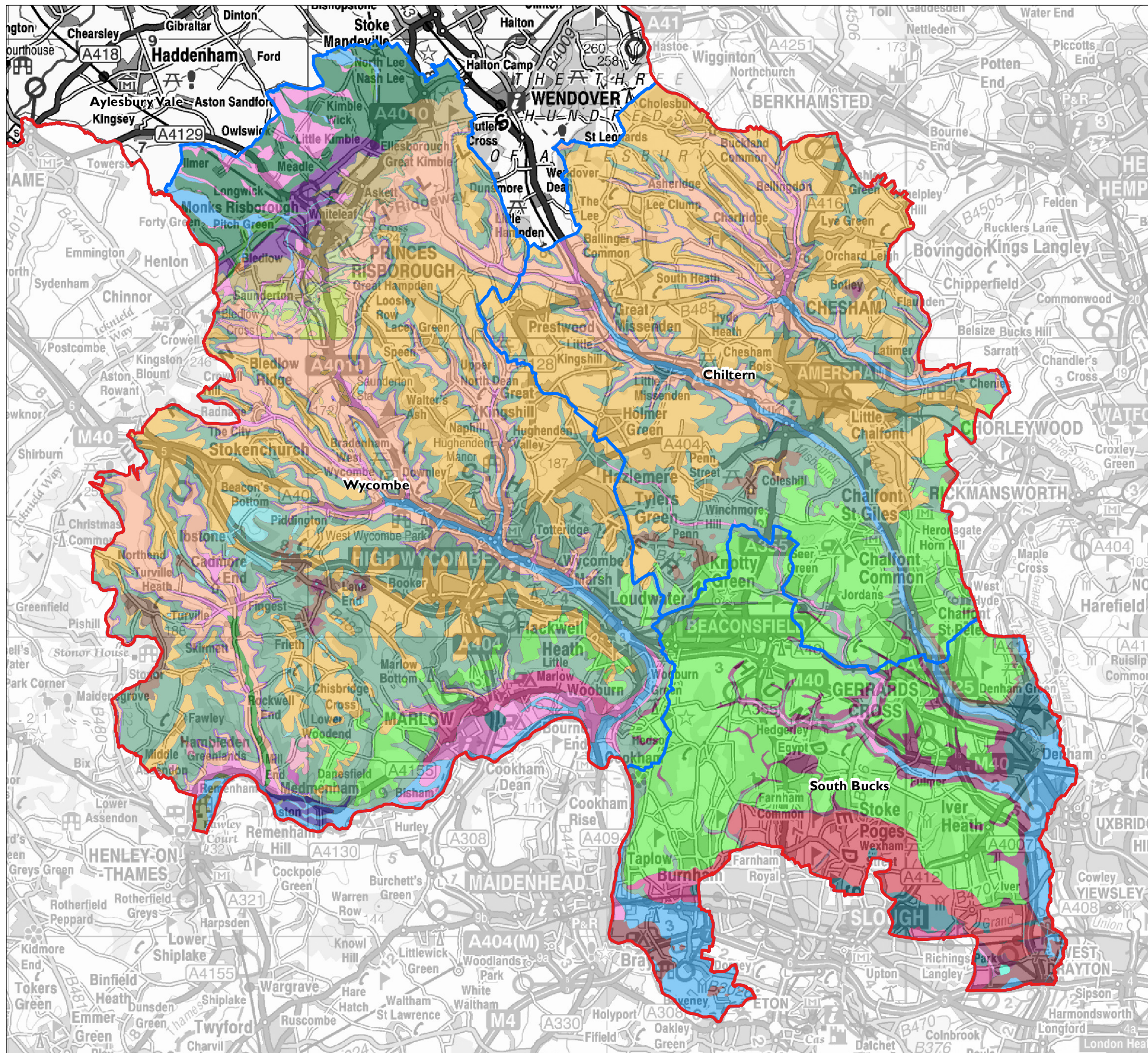
- Buckinghamshire County boundary
- District boundaries



Date: 17/08/2011



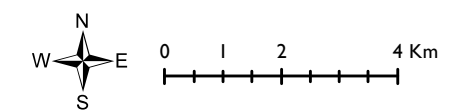




**Figure b: Bedrock Geology**

**Key**

- Buckinghamshire County boundary
- District boundaries
- Geology Type**
- Alluvium
- Ancestral Thames River Terrace Deposits
- Boyn Hill Gravel Formation
- Chalk Rock Member
- Clay with Fints
- Gault Formation
- Glauconitic Marl Member
- Head (Undifferentiated)
- Lambeth Group
- Langley Silt Formation
- London Clay Formation
- Melbourn Rock
- Middle Chalk
- Peat
- Princes Risborough Sand and Gravel
- River Terrace Deposits (Undifferentiated)
- River Terrace Deposits I
- River Terrace Deposits IA
- River Terrace Deposits IB
- River Terrace Deposits 7
- River Terrace Deposits 8
- Sand and Gravel
- Shepperton Gravel
- TUFA (Calcareous)
- Taplow Gravel Formation
- Totternhoe Stone Member
- Upper Chalk
- Upper Greensand Formation
- West Melbury Marly Chalk Formation
- Zig Zag Chalk Formation








Date: 17/08/2011

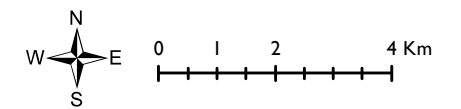
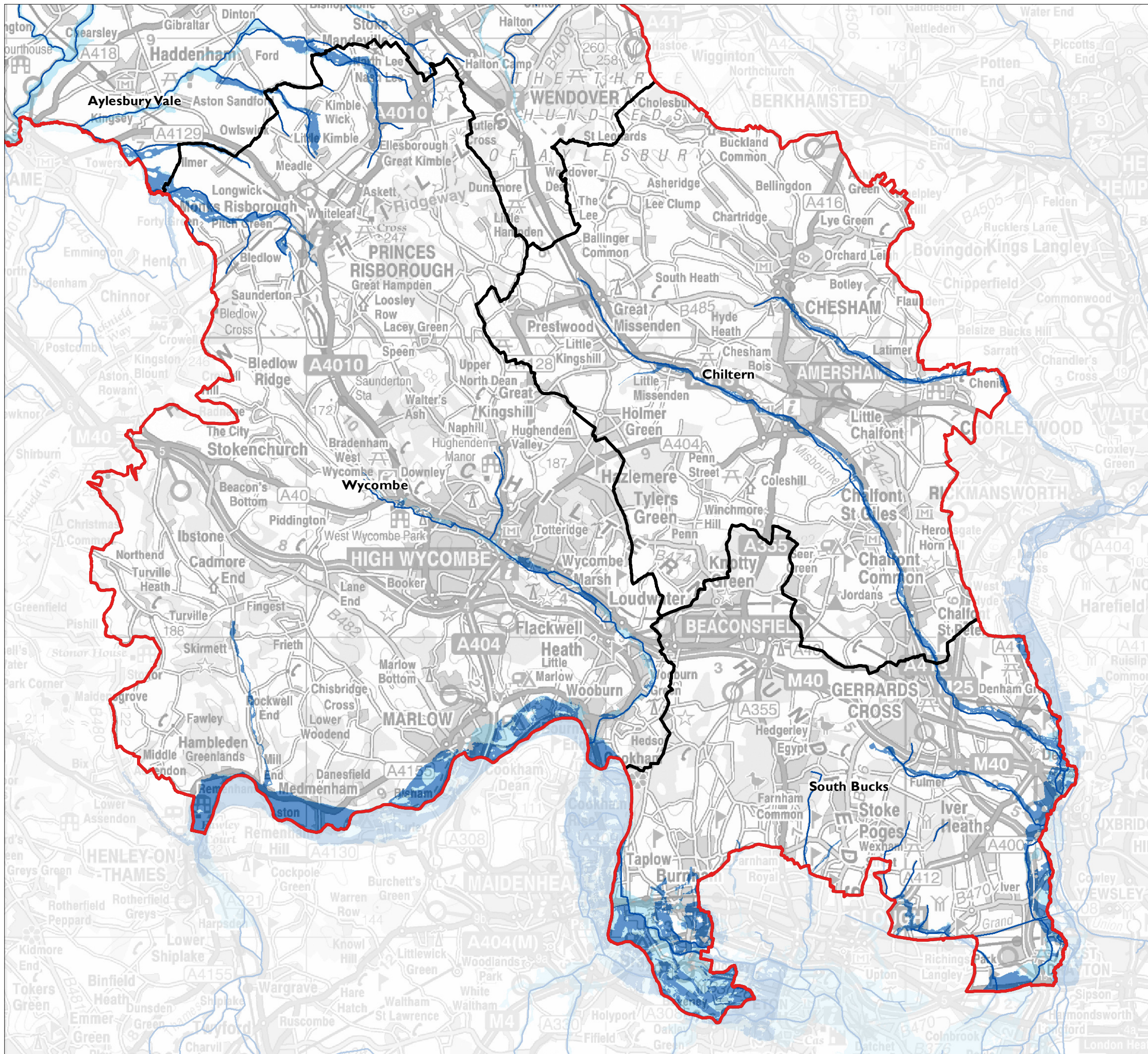




Figure c: Hydrology

Key

-  Buckinghamshire County boundary
-  District boundaries
-  Rivers
-  Flood zone 2
-  Flood zone 3



Date: 17/08/2011



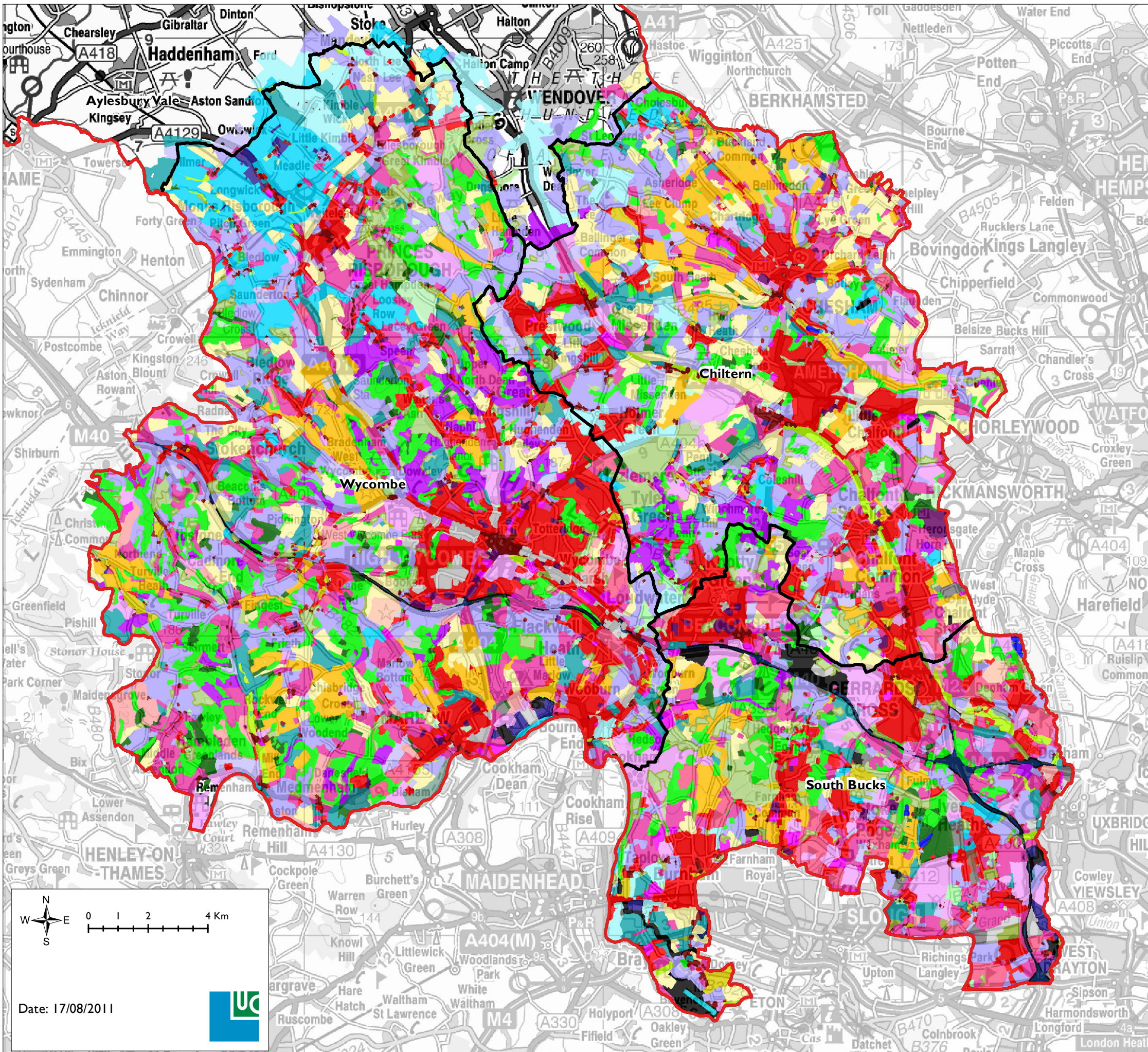




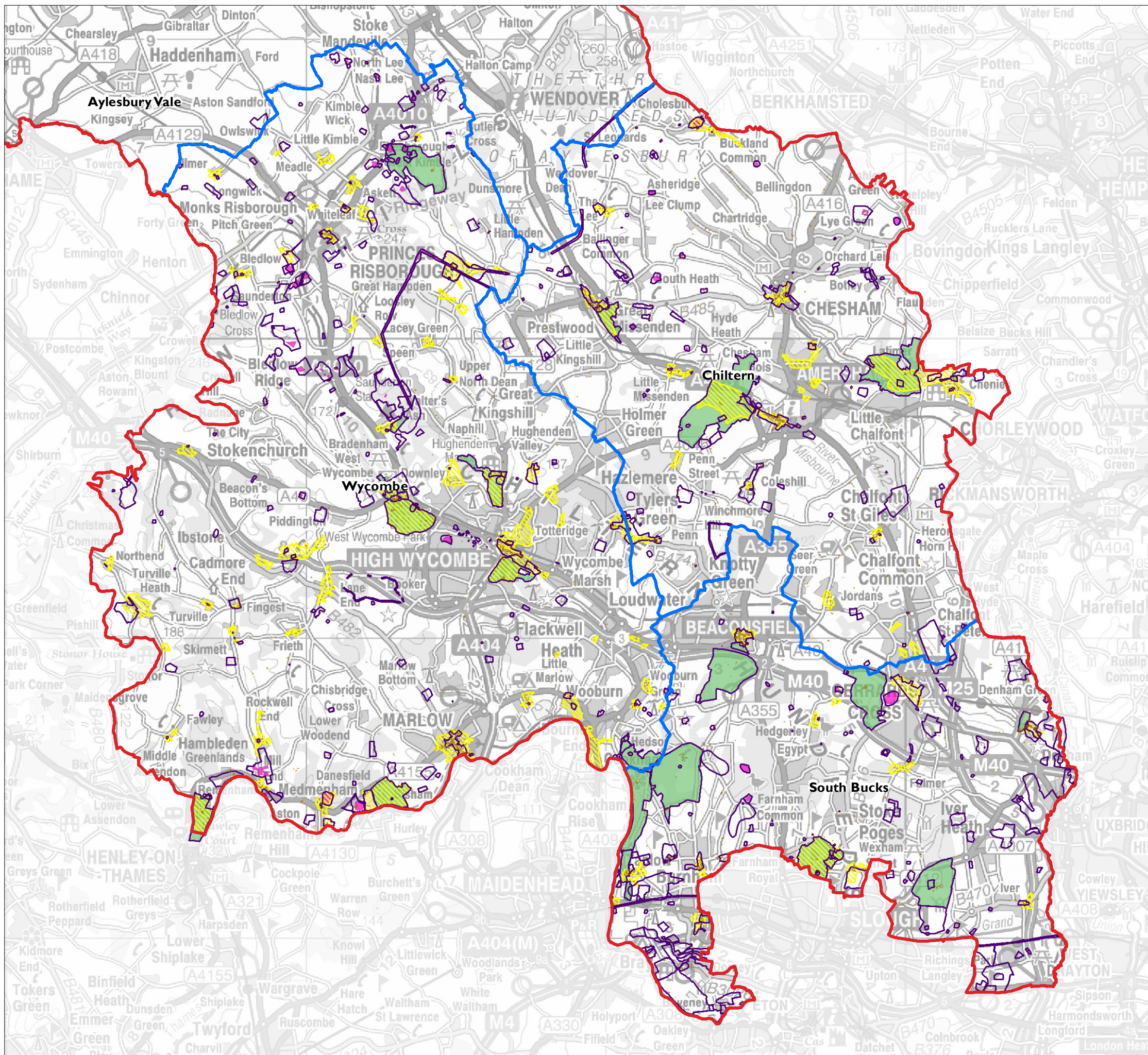
**Figure d: Historic Landscape Classification**

**Key**

-  Buckinghamshire County boundary
-  District boundaries
-  Airfield (Disused)
-  Allotments
-  Airfields
-  Assarts
-  Greens/Commons
-  Mineral Extraction (Disused)
-  Industrial (Disused)
-  Medieval Deer Park
-  Downland
-  Decoy Pond
-  Enclosure (Pre-18th Century Co-axial)
-  Parliamentary Enclosure (18th - 19th Century)
-  Fossilised Strips
-  Pony Paddocks
-  Enclosure (Pre18th - 18th Century 'Irregular')
-  18th century enclosure
-  Crofts (Medieval/Post Medieval)
-  Enclosure (19th Century)
-  Prairie Field
-  Enclosure (Pre-18th Century Regular)
-  Parliamentary Enclosure (subsequent divisions)
-  Enclosure (20th 21st Century)
-  Pre-18th Century Sinuous
-  Fish Farm/Hatchery
-  Watercress Farming
-  Government and Civic areas
-  Golf Courses
-  Hospitals Schools, Universities
-  Heaths
-  Industrial Disused
-  Industrial (post 1885)
-  Mineral Extraction
-  Flooded Restored Mineral Extraction
-  Mixed Origin
-  Motorways
-  Meadow
-  Nursery with Glasshouses
-  Common Arable (relict elements)
-  Ornamental Lake
-  Military Airfield
-  Military (Post Medieval)
-  Parkland (16th 19th Centuries)
-  Riverine Landscape
-  Rowing Lake
-  Water Reservoir
-  Settlement (Historic Core)
-  Shopping/Commercial Centres
-  Settlement (Modern)
-  Golf Courses
-  Recreation (20/21st Century)
-  Unimproved /Rough Land
-  Utilities
-  Woodland (Ancient Semi Natural)
-  Coniferous Woodland
-  Woodland (Common Woodland/Pasture)
-  Orchard
-  Woodland (19/20th Century Plantation)
-  Woodland (Replanted Ancient)
-  Woodland (Secondary 18th - 19th Century)
-  wt
-  Unknown
-  Caravan/Mobile Home Park



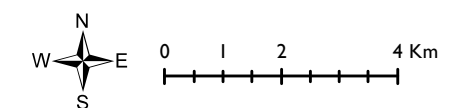




**Figure e: Historic Landscape Designations**

**Key**

- Buckinghamshire County boundary
- District boundaries
- Listed buildings
- Archaeological notification sites
- Conservation areas
- Scheduled monuments
- Registered parks and gardens

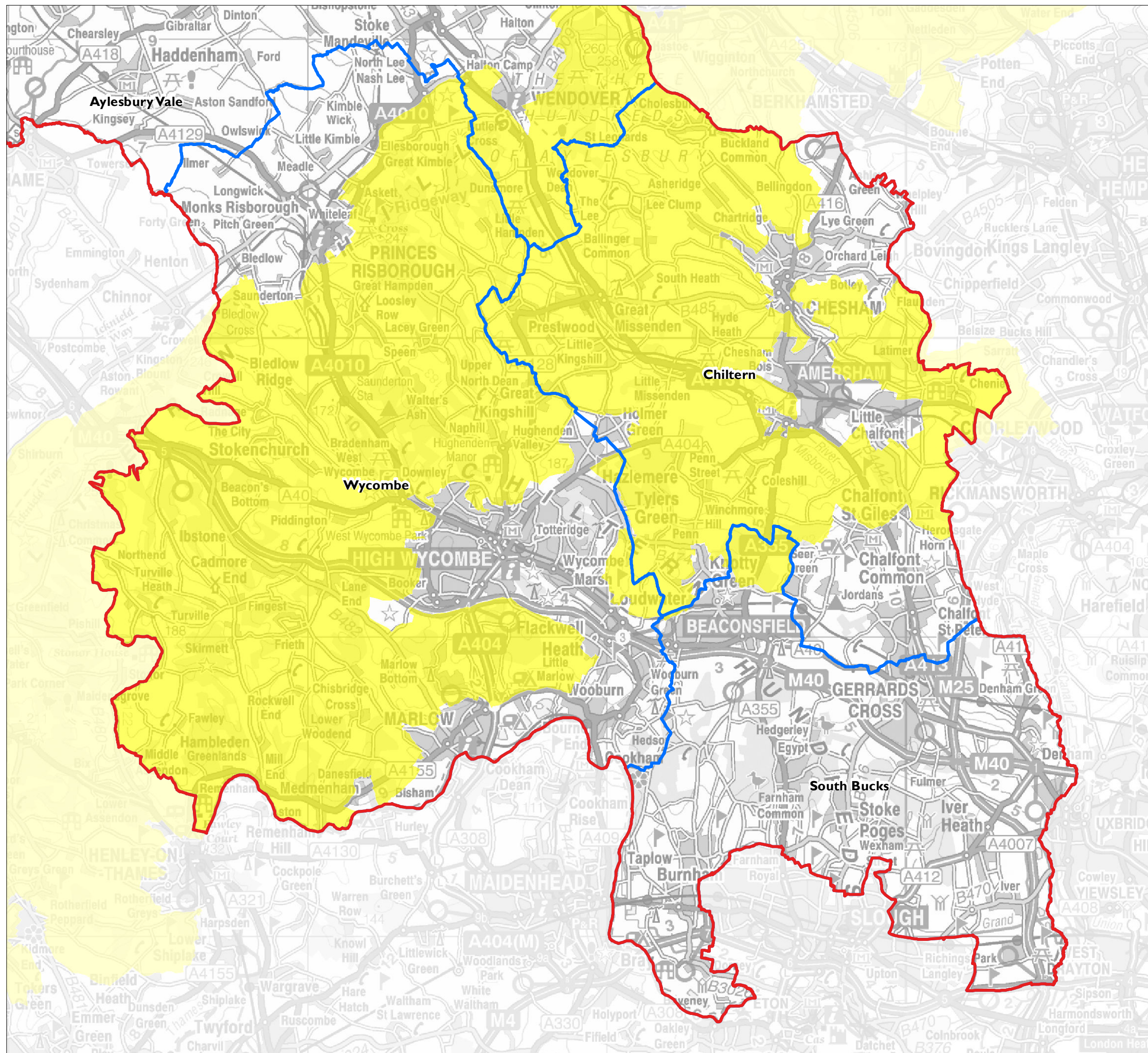


Date: 17/08/2011






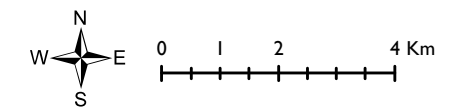


Figure f: Landscape Designations



**Key**

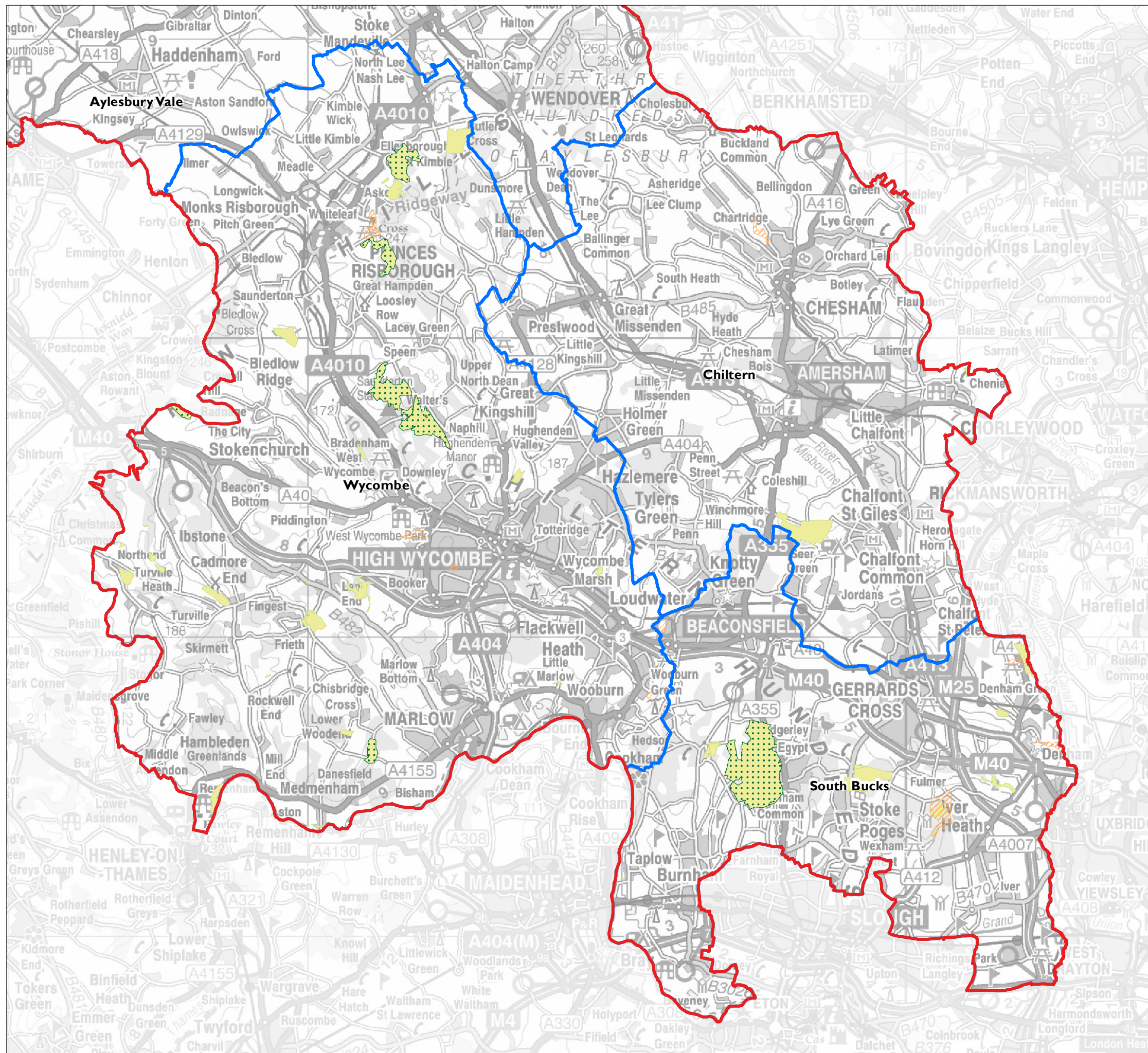
-  Buckinghamshire County boundary
-  District boundaries
-  Chilterns AONB



Date: 31/10/2011








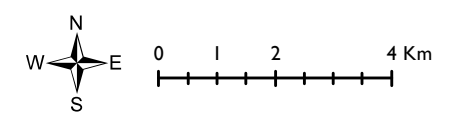




**Figure g: Statutory Nature Conservation Designations**

**Key**

-  Buckinghamshire County boundary
-  District boundaries
-  Special Areas of Conservation (SAC)
-  Sites of Special Scientific Interest (SSSI)
-  Local Nature Reserves (LNR)

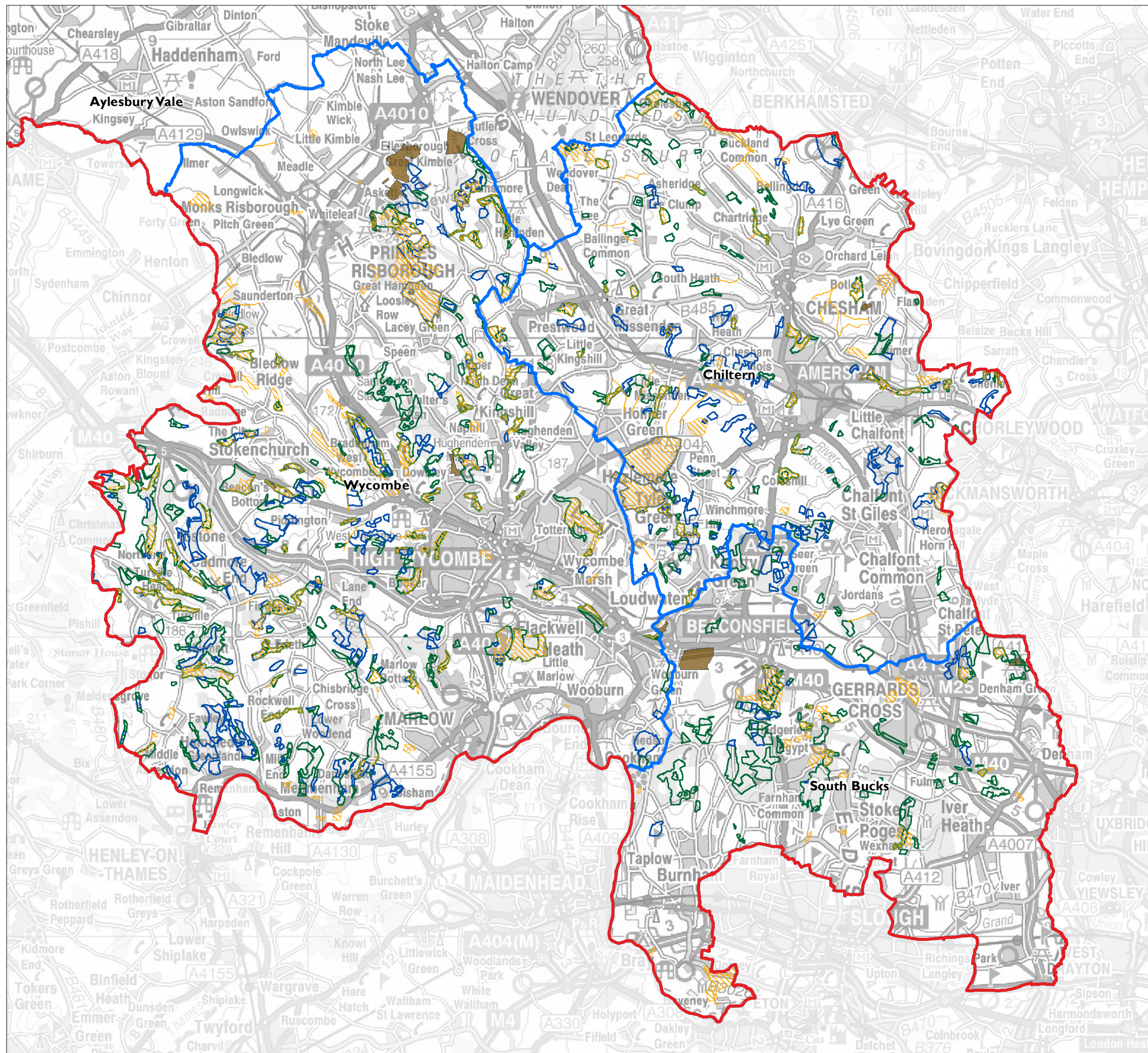


Date: 17/08/2011





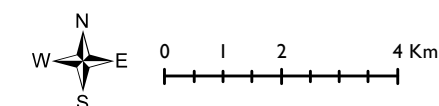




**Figure h: Non-Statutory Nature Conservation Designations**

**Key**

- Buckinghamshire County boundary
- District boundaries
- Local Wildlife Sites
- Ancient & Semi-Natural Woodland
- Ancient Replanted Woodland
- Local Geological Site

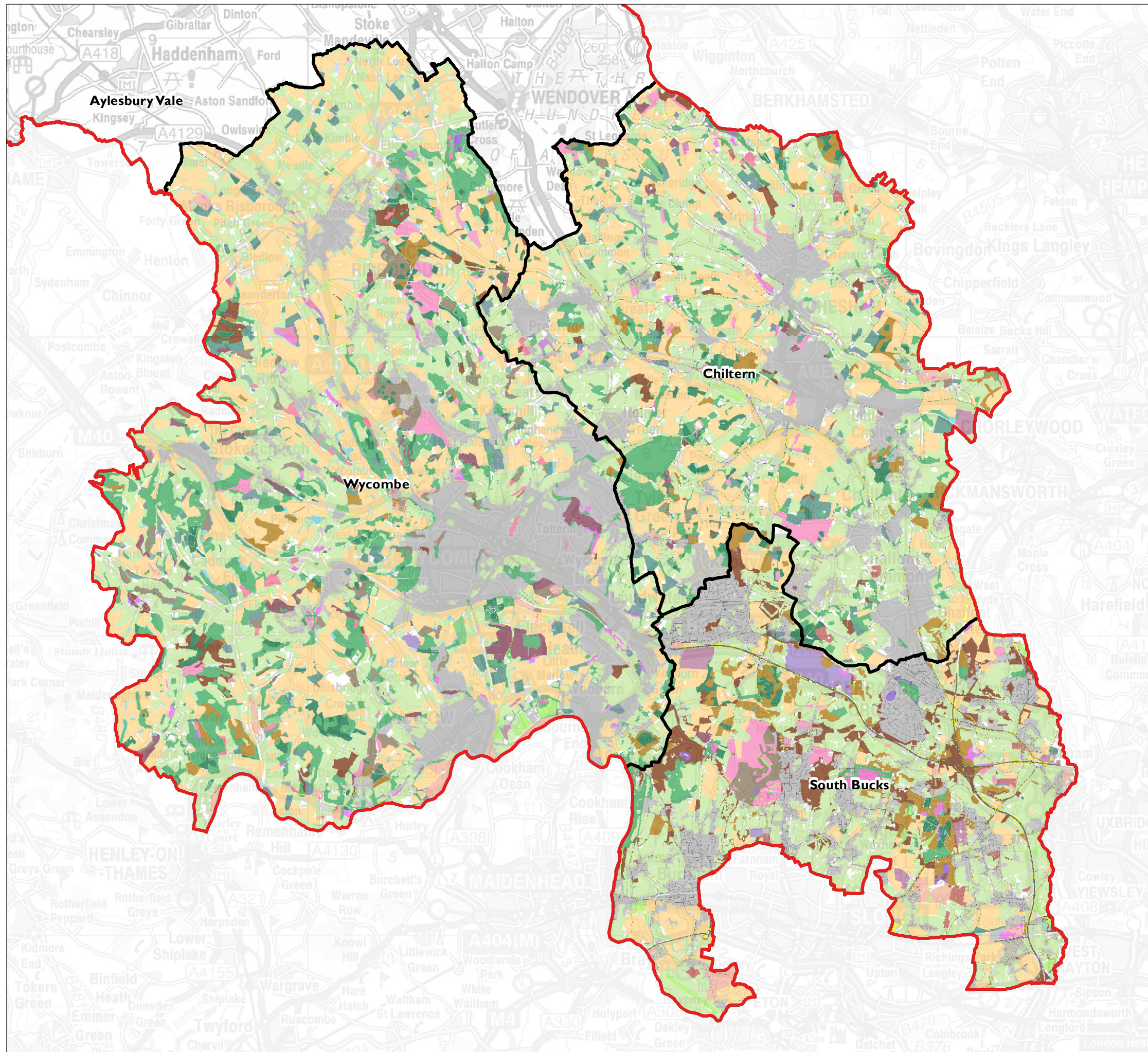


Date: 17/08/2011





**Figure i: Integrated Habitat Survey**

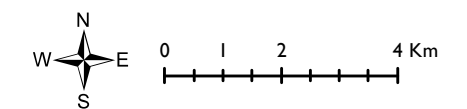


**Key**

- Buckinghamshire County boundary
- District boundaries

**Integrated Habitat Survey**

- Acid grassland
- Arable and horticulture
- Arable headland or uncultivated strip
- Beech and yew woodlands
- Bracken
- Broadleaved woodland
- Broadleaved, mixed, and yew woodland
- Built-up areas and gardens
- Calcareous grassland
- Cereal crops
- Chalk headwaters
- Chalk rivers (not including chalk headwaters)
- Coniferous woodland
- Dwarf shrub heath
- Eutrophic standing waters: general
- Fen, marsh and swamp
- Fens [lowland]
- Freshly ploughed
- Grassland, possibly unimproved
- Grassland, probably improved
- Improved grassland
- Intensively managed orchards
- Lowland beech and yew woodland
- Lowland calcareous grassland
- Lowland dry acid grassland
- Lowland meadows
- Lowland mixed deciduous woodland
- Mesotrophic standing waters
- Mixed woodland
- Neutral grassland
- Non-cereal crops including woody crops
- Other beech and yew woodlands
- Other natural rock exposure feature
- Purple moor grass and rush pastures [Molinia-Juncus]
- Quarry
- Reedbeds
- Refuse tip
- Rivers and streams
- Scrub woodland
- Standing open water and canals
- Transport corridor associated verges only
- Transport corridors
- Unknown terrestrial vegetation
- Vineyards
- Wet heaths
- Wet woodland
- Whole field fallow




Date: 19/09/2011






Figure j: Tranquillity Mapping

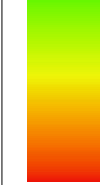
Key

 Buckinghamshire County boundary

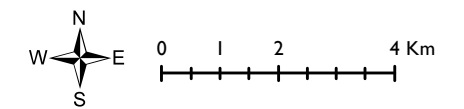
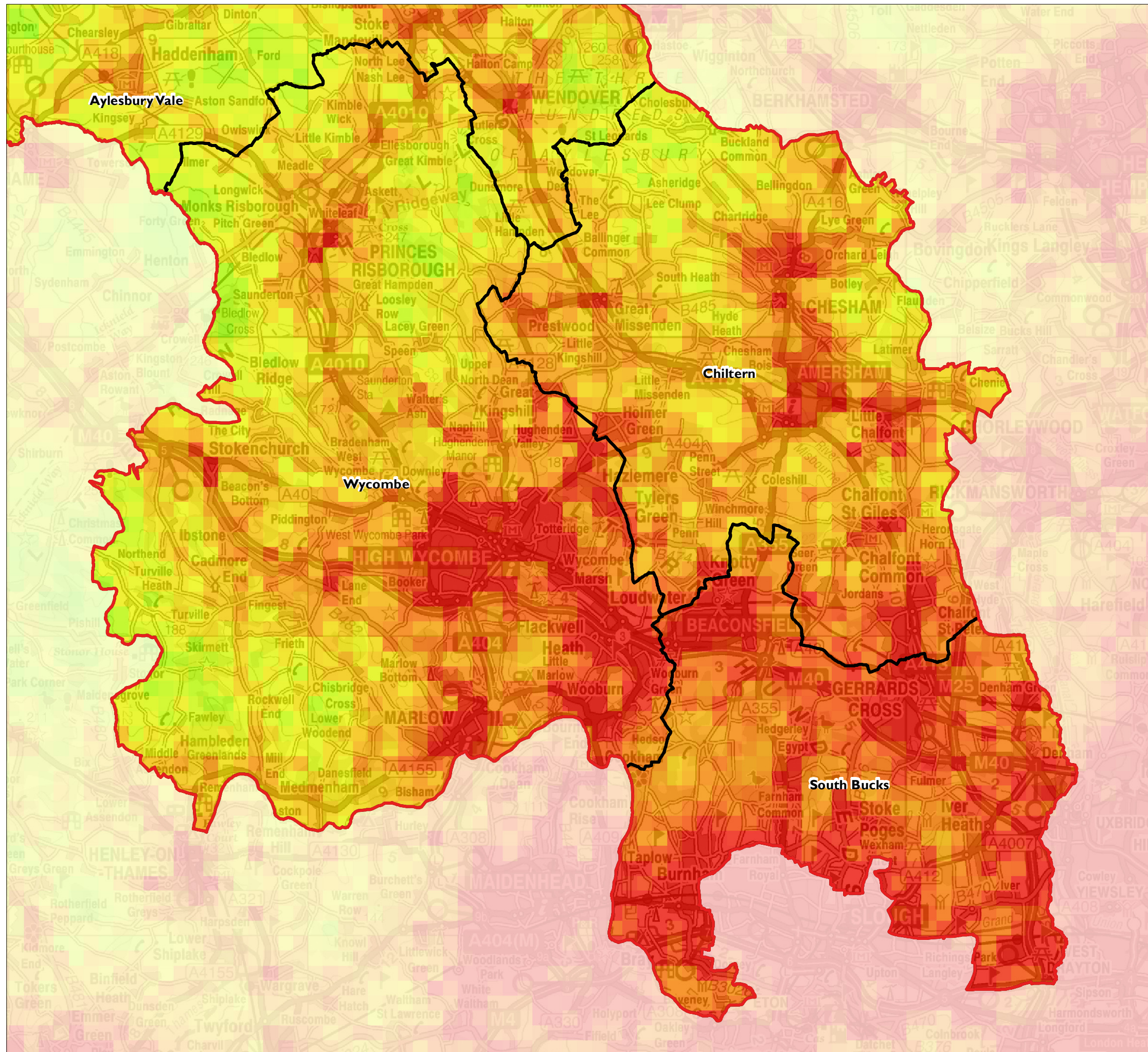
 District boundaries

CPRE Tranquillity Mapping

 Most tranquil



Least tranquil



Date: 19/09/2011



