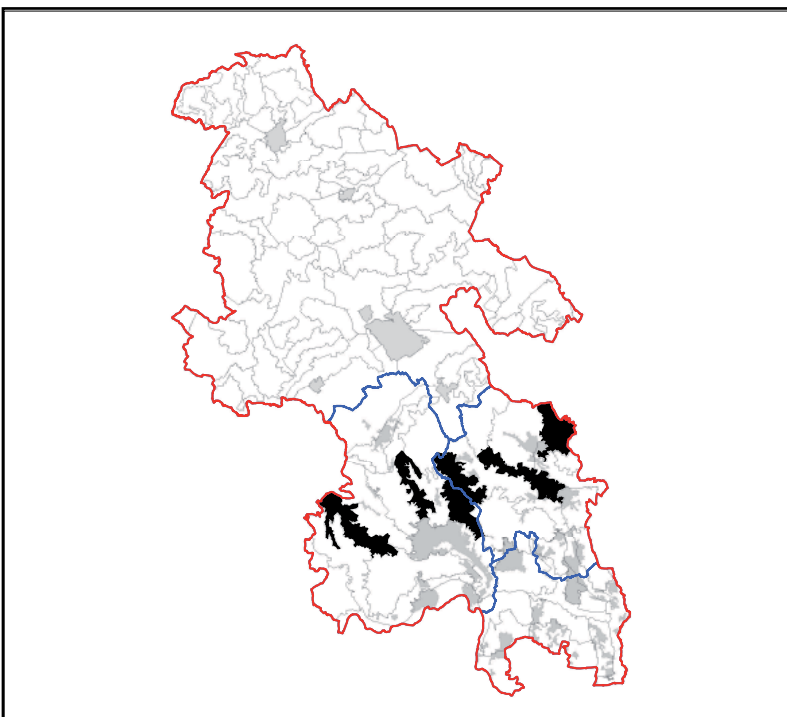


## LCT 16 SETTLED PLATEAU



### Constituent LCAs

|          |                        |
|----------|------------------------|
| LCA 16.1 | Stokenchurch           |
| LCA 16.2 | Walter's Ash & Naphill |
| LCA 16.3 | Great Kingshill        |
| LCA 16.4 | Hyde Heath             |
| LCA 16.5 | Ashley Green           |





## LCT 16 SETTLED PLATEAU

### KEY CHARACTERISTICS

- Elevated, gently undulating plateau, predominately chalk overlain by clay with flints, which gives rise to loamy/clayey soils with impeded drainage.
- A mosaic of farmland, comprising arable fields, rough grazing, paddock and pasture. Defined by hedgerows and rural fencing, and interlocked with small areas of woodland which create a landscape of both openness and enclosure.
- Small pockets of woodland dispersed throughout, often along plateau edges, transitional with the steeper valley slopes.
- High density of dispersed settlement, comprising small nucleated villages and hamlets, which occasionally spread out along roads. Individual properties and farmsteads are dispersed across the area. A mix of modern and traditional buildings.
- Areas of common land are occasionally dispersed across these landscapes, often associated with small villages, and providing important recreational opportunities and ecological importance.
- Some busy roads cross the plateaus, with a network of smaller rural roads, which radiate into adjacent valleys. A good rights of way network, with numerous tracks through woodland areas.
- A mix of field enclosures, with some early pre 18<sup>th</sup> century enclosures including some co-axial and assart systems, and later 19<sup>th</sup>, 20<sup>th</sup> century and parliamentary enclosures.
- Extensive views across open, flat fields to a wooded or open skyline. Settlement and development occasionally fragment and disrupt views.
- A simple and legible landscape, with a tranquil and rural character away from settlement and busy roads.

