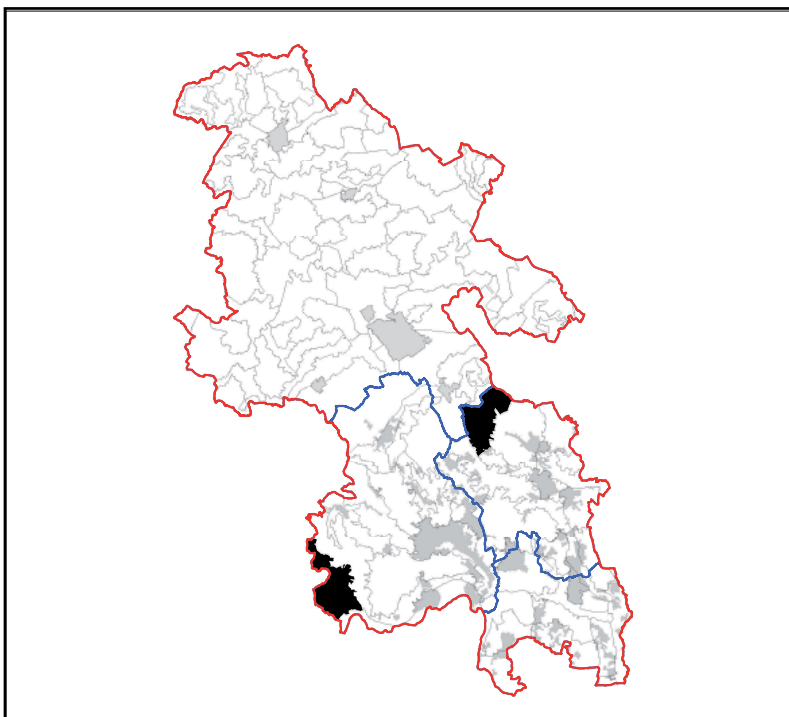


LCT 15 UNDULATING PLATEAU

Constituent LCAs

LCA 15.1 Lee & Buckland Common
LCA 15.2 Fawley



LCT 15 UNDULATING PLATEAU

KEY CHARACTERISTICS

- Elevated and undulating Upper Chalk plateau overlain by Clay with Flints. Also incorporating sloping valley sides to the south and west. Cut by dry chalk valley in places which create undulations in the landform.
- Large swathes of woodland, much of which is ancient with smaller blocks interspersed. Network of woodland, hedgerows and green lanes is important for biodiversity.
- Clay and flints gives rise to a heathy character in places, with scrub and bracken noticeable in hedgerows and road side verges. Some dispersed areas of calcareous grassland.
- Fields are a mixture of arable, pasture and some paddocks interspersed with woodland, predominately within early field enclosures.
- A low density of settlement. Small villages/hamlets, historic commons and scattered farmsteads and individual buildings. Distinctive vernacular building types are common.
- Winding, narrow rural lanes are enclosed by tall hedgerows, with occasional sunken lanes. Crossed by a network of rights of way and bridleways including long distance footpaths.
- Varying levels of enclosure, with a strong sense of containment within woodland and along hedged roads and in villages, contrasting with open farmland. Woodland limits and contains views within the area.
- An intimate landscape, with a rural and peaceful character.

