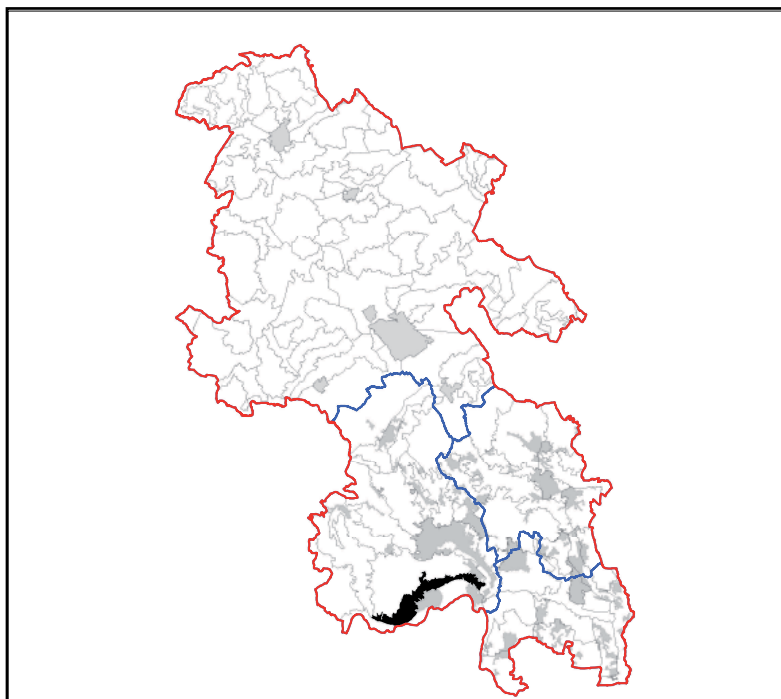


LCT 21 VALLEY SLOPE

Constituent LCAs

LCA 21.1 Thames



LCT 21 VALLEY SLOPE

KEY CHARACTERISTICS

- Transitional, gently sloping valley side, gradually descending from higher ground to floodplain. A sloping and gently rolling topography, composed of chalk and river terrace deposits.
- Fields of arable, pasture and rough grazing, which are delineated by a network of hedgerows and trees.
- Large blocks of woodland located along upper slopes. Smaller areas of woodland are interlocked with farmland. Some pockets of calcareous grassland.
- Settlement comprises town and village edges, small hamlets and scattered farmsteads, with a mix of historic character and modern infilling.
- Archaeological features and historic parkland scattered across this landscape.
- Some busy roads cut through, elsewhere, small rural roads and lanes, often enclosed by trees and hedgerows and sunken in places, cross the slopes.
- The open, sloping landform allows long views out across lower floodplain topography.
- Away from busy roads and settlement edges, enclosed lanes, farmland and woodland create a rural and peaceful character.