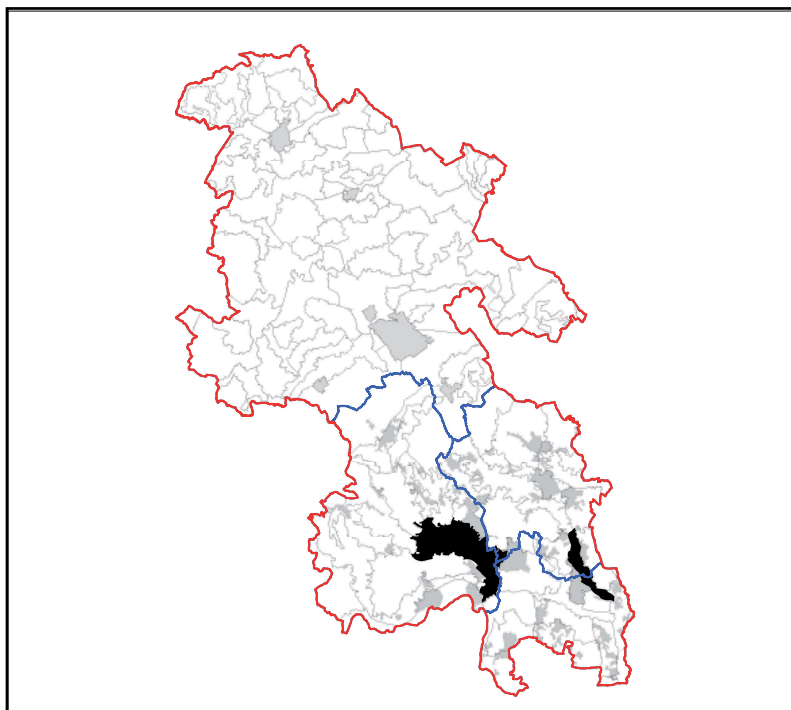


## LCT 19 SETTLED RIVER VALLEY

### Constituent LCAs

LCA 19.1 High Wycombe Valley  
LCA 19.2 Lower Misbourne



### KEY CHARACTERISTICS

- Chalk river valley cutting into the dip slope.
- Largely inconspicuous river corridor, occasionally becoming more prominent or culverted particularly within settlement.
- A largely settled and developed landscape, with towns/villages occupying the landscape and dispersed along the valley and road corridors. Farmland and woodland occurs along valley sides and tops, which is a particular feature within the River Wye Valley.
- Limited woodland, with occasional pockets of woodland.
- Views are typically contained by settlement within the valley, with longer views from higher valley sides.
- Some archaeological and historic features largely associated with settlement. Areas of historic parkland.
- Road corridors are integrated by settlement and other development along the valley floor, with smaller roads crossing the valley sides.
- High levels of activity and movement and consequentially a lack of unity due to the extent of development. Pockets of tranquillity are interspersed, such as the open valley sides along the River Wye Valley.