

**Buckinghamshire  
SENDIAS  
Online Training  
coproduced with  
FACT BUCKS**



A local voice for parent carers of children with SEND



## Choosing a school or college with and without an EHC plan

- **Summary:** This webinar aims to equip you for choosing an early years setting, school or further education provider. It covers children and young people aged from birth to 25 with and without an EHC plan. It shows you the steps you can take and the relevant law to ensure you can make informed decisions. It gives advice on changing provider and preparing your child for their move.
- **Duration:** 1 hour 15 minutes

# Choosing an education provider without an EHC plan - Finding an early years provider

## Resources to help you

[Childcare providers including childminders and settings for children under the age of 5](#)

[The Childcare Brokerage Service](#)

[What each provider offers for children with SEND](#)

[Paying for early years childcare](#)

[Support for children with SEND in Early Years settings](#)

## When to apply by:

You can apply for an early years setting for a child without an EHC plan at any time

# Choosing an education provider without an EHC plan - Finding a school

## Resources to help you

[School admissions](#)

[Education options and admissions for children with SEND](#)

[School appeals for children without EHC plans](#)

[Apply to change school during the academic year \(in-year transfer\)](#)

[Directory of all Buckinghamshire mainstream schools](#)

## When to apply by:

Primary schools: Apply by 15th January

Secondary schools: Apply by 31st October

Any application for a school place on or after the first day of the academic term will be considered as an in-year application.

Any application for another age group will also be considered as an in-year application.

# Choosing an education provider without an EHC plan - Finding a further education provider

## Resources to help you

[Post-16 education and training](#)

[Find a Post-16 college or sixth form](#)

[Getting Your Child Started With Post  
GCSE Choices | UCAS Progress](#)

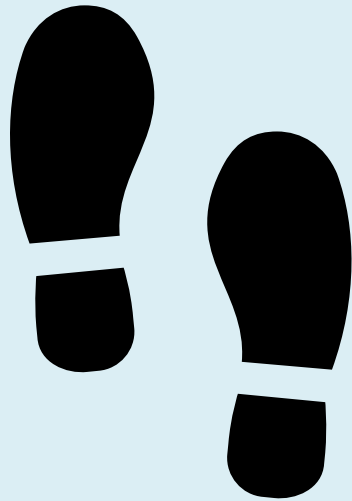
[Combining work with part-time study or  
training](#)

[Bucks Skills Hub](#)

[Adviza Charity](#)

- Attend open days
- Speak with a career's adviser
- Check the providers website for deadline dates to apply by
- College applications start from Oct/Nov in Year 11 and usually remain open until the end of Spring term
- Apply online through providers website

# Choosing an education provider with an EHC plan



Follow these steps to  
help you in choosing  
an education  
provider...

# Choosing an education provider with an EHC plan

1. Know the difference between mainstream and specialist providers
2. Find an education provider – search engines
3. Know the types of education provider and why this is important
4. Know key things to consider when choosing an education provider
5. Find out more about educational providers you are interested in
6. Know what questions to ask
7. Know the law and process that will affect you
8. Know what to do in exceptional circumstances
9. Helping your child to move to a new educational provider

# 1. The difference between mainstream and specialist providers

## Mainstream schools

Maintained schools or academies that are not special schools.

## Additionally Resourced Provision

Some maintained mainstream schools and academies have Additionally Resourced Provisions (ARPs). In Buckinghamshire, there are ARPs specialising in helping children with:

- Communication and Interaction difficulties
- Speech and language difficulties
- Hearing impairment
- Physical disability
- Autism

## Special schools

Special schools are specially organised to give special educational help. All children attending a special school have special educational needs and an EHC plan.



## 2. Finding an education provider – early years setting

- You do not have to choose an early years setting in Buckinghamshire.
- You do not have to choose the nearest one.
- [SEND Childcare and Early Years Buckinghamshire](#) - a directory of childcare providers including childminders and settings for children under the age of 5
- [Find activities and organisations near you](#) - information about what each provider offers for children with special educational needs and disabilities (SEND)
- [Local Offer for SEND in Buckinghamshire | Family Information Service](#)
- Children not yet of compulsory school age (from the term after a child is 5 years old) are **not** usually eligible for free transport to their early years setting.
- [Transport for children aged 0 - 5](#)

## 2. Finding an education provider – school

You do not have to choose a school in Buckinghamshire.

You do not have to choose the nearest school.

Distance may be a factor which affects any entitlement to transport.

Having an EHC plan does not entitle a child to free home to school transport.

Search engines to help you find schools:

- [Local mainstream schools](#)
- [Local mainstream schools with additionally resourced provision \(ARP\)](#)
- [Directory of all Buckinghamshire mainstream schools](#) including Ofsted reports and performance tables for each school
- [Local special schools](#)
- [The Good Schools Guide](#) includes all types of school in Buckinghamshire and beyond

[Finding a school | Buckinghamshire Council](#)

[Transport for children aged 5 -16](#)

## 2. Finding an education provider – further education provider (i)

Your young person can leave school on the last Friday in June if they will be 16 by the end of the summer holidays.

They must then do one of the following until they are 18:

- A. stay in full-time education, for example at a college**
- B. start an apprenticeship or traineeship or supported internship**
- C. spend 20 hours or more a week working or volunteering, while in part-time education or training**

Your young person does not have to choose a further education provider in Buckinghamshire. They do not have to choose the nearest one.

Even if a child is eligible for home to school transport when they are of compulsory school age, the law for young people is different and there is no entitlement to transport.

[Transport for young people aged 16 to 19 | Buckinghamshire Council](#)

[Transport for young people aged 19 to 25 | Buckinghamshire Council](#)

## 2. Finding an education provider – further education provider

### A. Stay in full-time education

- Your young person could carry on learning through a full-time study programme. This could be made up of different qualifications and include things like:
  - courses that prepare them for adult life, work and taking part in the community such as ASDAN SEND Provision and OCR Life and Living Skills courses
  - academic subjects leading to GCSEs or A Levels or International Baccalaureate
  - work-related courses like T Levels or BTEC diplomas
  - English and maths skills
- Local further education providers
- Find an independent college - Natspec

## 2. Finding an education provider – further education provider

### B. Combine work and study

- **Traineeships** - Entry requirements: aged between 16 to 24 or up to 25 with an Education Health and Care Plan with no higher than a level 3 qualification
- **Supported internships**- Entry requirements: Aged 16-24 with an Education Health and Care Plan – requiring extra support to get a job.
- **Apprenticeships** - Entry requirements: Will be dependent on the industry, job role and apprenticeship level
- **School leaver schemes**- Entry requirements: Usually high grade A levels or equivalent and a keen interest in the sector

- [Find a traineeship and Traineeship film](#)
- [Supported internships](#) and [BSI Bites Buckinghamshire Supported Internship podcast episode 1](#)
- [Become an apprentice](#) and [Into Apprenticeships](#)
- [School leaver schemes](#)

## 2. Finding an education provider – further education provider

- **C. Work or volunteer and study part-time**
- Between 16 and 18 your young person can work or volunteer for 20 hours or more if they combine it with part-time study or training.
- They may also be able to combine lots of different types of activities, like a part-time college course to improve their English and maths, volunteering in a charity shop and getting skills to take care of themselves and travel independently, together with employability support to find the best places to look for jobs and get support in the workplace.
- Supported employment schemes are available for young people with significant disabilities. Find out more here: [British Association for Supported Employment](#)
- Schools and colleges know their students' needs well and will seek opportunities for them offsite and onsite which are motivating and purposeful and lead towards employability.

## 2. Finding an education provider – further education provider

- Preparing for Adulthood - Education, Employment and Meaningful Occupation – FACT Bucks/SENDIAS recorded webinar



What does the law say?

**Section 38(3)  
schools**

### 3. Types of education provider and why this is important

Your rights to request a provider are stronger for these types than for others.

(a) a maintained school;

(b) a maintained nursery school;

(c) an Academy;

(d) an institution within the further education sector in England;

(e) a non-maintained special school;

(f) an institution approved by the Secretary of State under section 41 [Independent special schools and post-16 institutions - GOV.UK \(www.gov.uk\)](http://www.gov.uk)

- Children and Families Act 2014 – Section 38(3)





**What does the  
law say?**

**The 3 reasons  
why your  
request can be  
refused**

### 3. Types of education provider and why this is important

To refuse to place your child at your preferred school or college of these types, the council must have at least one of these three reasons:

1. The education provider is unsuitable for the age, ability, aptitude or special educational needs of the child or young person

2. The attendance of the child or young person would be incompatible with the provision of efficient education for others

3. The attendance of the child or young person would be incompatible with the efficient use of resources



**What does the  
law say?**

**Mainstream  
education**

### 3. Types of education provider and why this is important

The right to mainstream education is especially strong. The local authority must make sure a child with an EHC plan is educated by a mainstream provider unless that is incompatible with:

(a) the wishes of the child's parent or the young person, or

(b) the provision of efficient education for others.

- Children and Families Act 2014 – [Section 33](#)



## What does the law say? **Independent schools**

[CLICK  
HERE FOR  
MORE  
INFO ON  
IPSEA's  
WEBSITE](#)

### 3. Types of education provider and why this is important

If you are making representations for an independent school or college;

The local authority must have regard to the general principle that pupils are to be educated in accordance with the wishes of their parents, so far as that is compatible with the provision of efficient instruction and training and the avoidance of unreasonable public expenditure.

The local authority must have regard to the views, wishes and feelings of the child and their parent, or the young person.

- Education Act 1996 – Section 9 •
- Children and Families Act 2014 – Section 19 •

# 3. Types of education provider and why this is important

Establishment	
<b>Pebble Brook School</b>	
URN: 110576 Community special school <a href="#">Do</a>	
<a href="#">Details</a> <a href="#">Governance</a> <a href="#">Links</a> <a href="#">Location</a>	
<a href="#">Show map</a>	
<b>Address</b>	Churchill Avenue, Aylesbury, Buckinghamshire, HP21 8LZ
<b>Local authority</b>	<a href="#">Buckinghamshire</a> (825)
<b>Headteacher/Principal</b>	Mr David Miller
<b>Age range</b> <span>?</span>	11 to 19
<b>Phase of education</b>	Not applicable
<b>School type</b>	Community special school
<b>Gender of entry</b>	Mixed
<b>ID</b>	URN: 110576, DfE number: 825/7010 UKPRN: 10016592
<b>Establishment status</b>	Open
<b>Admissions policy</b>	Not applicable
<b>Website</b>	<a href="http://www.pebblebrookschoo.org.uk">http://www.pebblebrookschoo.org.uk</a> (opens in new tab)

All education providers in England must be registered with Ofsted.

## Early years settings

Early years settings are for children aged 0 – 5.

In Buckinghamshire all early years providers are independent except for Henry Allen Nursery School and Bowerdean Nursery School which are maintained nursery schools.

## Schools

Schools are for children aged 5 – 16. You can find the type of school using the [Get Information about Schools](#) tool.

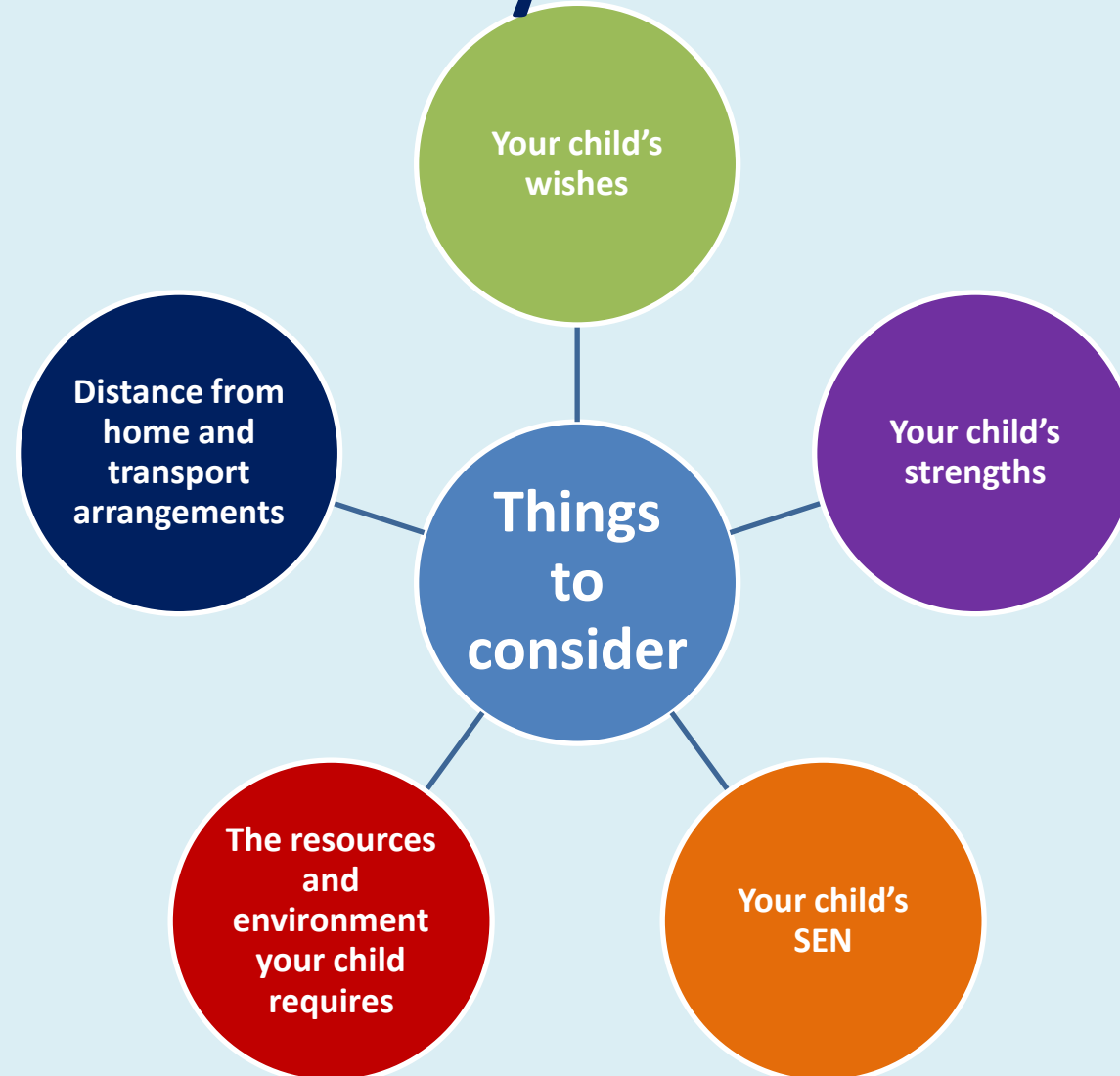
- Click on Name and type in the school's name.
- Press the green search button
- Find 'School type'

## Further education providers

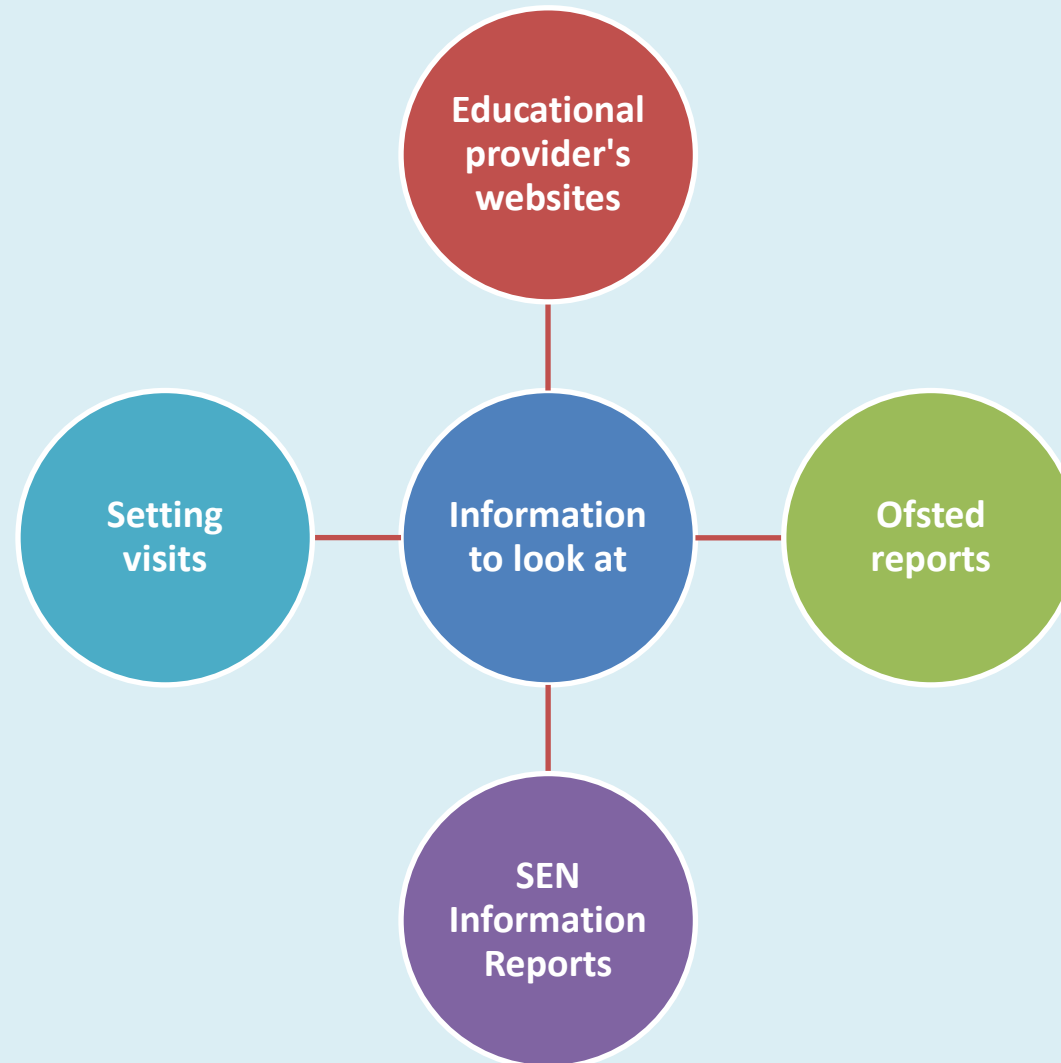
Further education providers are for students aged 16 and over. Sixth forms can be found using the [Get Information about Schools](#) tool. State-funded further education colleges are listed here: [List of Colleges in the UK | Association of Colleges \(aoc.co.uk\)](#) Other providers are independent, although some have 'section 41' status.

## [Section 41 providers](#)

# 4. Choosing the right education provider for your child



## 5. Find out more about the education providers you are interested in



[Find out more about schools you are interested in | Buckinghamshire Council](#)

[Find an Ofsted inspection report](#)

# 6. Know what questions to ask

- Setting organisation
- Your child’s SEND and the help they require
- Communicating with the setting
- Inclusion at setting
- Supporting appropriate behaviour
- Moving on from setting
- Talking to other parents at the setting
- Residential settings

**DiAS**  
Devon Information  
Advice and Support

### Choosing a School

These are our suggested main areas to focus on, but you can change them to meet your needs. You can replace School A/B/C with the names of the schools you have visited. The boxes will get bigger as you type into them.

Topics/Questions to Consider	School A	School B	School C
<b>Your child's views</b> - likes - dislikes			
<b>Your general impression</b> - likes - dislikes			
<b>How will your child's needs be supported?</b> - specific SEN experience of the staff/training - adult support, such as teaching assistant support and specialist teachers - equipment/materials and adjustments to the environment - adjustments to teaching and curriculum			
<b>Specialist support</b> - what is there? - how is it arranged and given?			
<b>Communication with you</b> - how often will you meet the SENCO and			

[Choosing a School - Comparison Table Template](#)



**What does the  
law say?**

**When can I  
request an  
education  
provider?**

## 7. Know the law and process that will affect you

You can ask for an early years setting, school or college or to change the current provider at the following times:

1. When you receive a draft EHC plan during the EHC needs assessment process
2. When you receive a draft amended EHC plan following an annual review or early annual review
3. When you disagree with a Final EHC plan or Final amended EHC plan and follow the [Tribunal appeal](#) process

• Children and Families Act 2014 – Section 39(4) •



# A. My child is going through an EHC needs assessment and does not yet have a final EHC plan

If Buckinghamshire Council agree to issue the plan, you are sent a draft EHC plan.



The integrated SEND team at Buckinghamshire Council will ask you to make your request for a school or other educational setting.



Send your choices in an email replying to the message that comes with your draft EHC plan. You have 15 days from receiving the draft EHC plan to do this. You also have the right to ask for changes to be made to the draft EHC plan at this time.



**What does the  
law say?**

**What is phase  
transfer?**

## **B. It is time to change to another provider**

preschool to infants or  
primary school  
infant to junior school  
junior or primary to  
secondary school

- 15 February in year  
of transfer

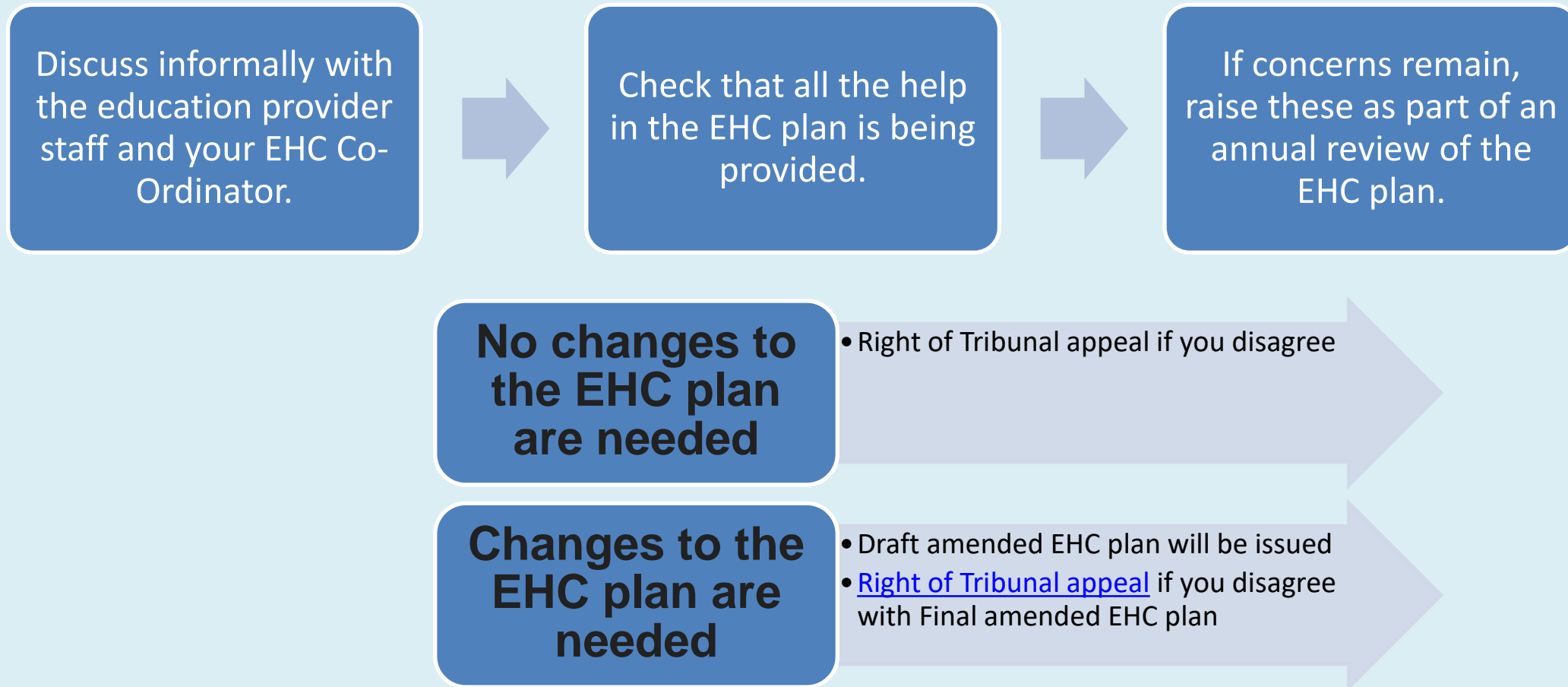
secondary school to  
further education provider

Further education  
provider to further  
education provider

- 31 March in year of  
transfer

- Children and Families Act 2014 – Section 39(4) •

## C. The provider named can no longer meet my child's needs



## D. My child has a Final EHC plan naming a type of provider, but it does not name a provider

Contact your EHC Co-Ordinator to find out what to expect.



Ask for Alternative provision to be put in place until a new provider is found.




You may also want to take advantage of your right to a Tribunal appeal if progress seems slow.

## **8. Know what to do in exceptional situations: A - I want a mainstream school with Additionally Resourced Provision (ARP)**

Your rights are the same for a mainstream school with an ARP as they are for a mainstream school without an ARP. The process is the same too. Request an ARP during the annual review process.

The help your child will receive from the Additionally Resourced Provision must be detailed in Section F of their EHC plan.

The mainstream school will be named in Section I of the EHC plan.



Placement in  
an ARP  
requires an  
EHC plan

# 8. Know what to do in exceptional situations:

## B. I want to delay my child's start at school or change their year group at school

- Children without an EHC plan
- [Admission of children below compulsory school age and deferred entry to school - Child Law Advice](#)
- [When your child can start school - Buckinghamshire Council](#)
- [Delay your child's school start date | Buckinghamshire Council](#)
- [Beyond the reception year | Buckinghamshire Council](#)
- Children going through an EHC needs assessment
- Children with an EHC plan
- [Asking for an early review of an EHC plan - IPSEA](#)
- [Case law example for child with EHC plan from IPSEA](#)

# 8. Know what to do in exceptional situations:

## C. I don't think my child can attend a school or further education provider

- **Alternative Provision**

[Alternative provision | Buckinghamshire Council](#)

'Alternative provision' is education outside of school, arranged by local authorities or schools for children who, because of exclusion, illness, or other reasons, would not otherwise receive suitable education.

- **Education Otherwise Than at School (EOTAS)**

[Education Otherwise than at School \(EOTAS\) | Buckinghamshire Council](#)

Education Otherwise than at School is education provision to meet specific needs of children and young people who, for whatever reason, cannot attend a mainstream or special school. This is a formal special education package made under an Education, Health and Care Plan (EHCP), for which the local authority, in this case Buckinghamshire Council, remains legally responsible for.

# 8. Know what to do in exceptional situations:

## D. My child has not been placed at the education setting I wanted

What options are there?

- [Speak with your EHC Co-Ordinator](#)
- [Look into the appeals process](#)
- [Contact SENDIAS for further advice using our contact form](#)
- [SENDIAS news, events and webinars | Buckinghamshire Council](#)



# 9. Helping your child to move to a new educational provider

Family Support Service

[Support your child's transition to secondary school.](#)

[Moving up to secondary school | Family Information Service \(buckinghamshire.gov.uk\)](#)

[How to move up to secondary school - course for Year 6's](#)

The Foundation for People with Learning Disabilities

[Guide for pupils with special educational needs moving on to secondary school.](#)

# Beth and Amber:

## How we chose an education provider



# Bucks SENDIAS Service

- If you require further information to help you please first refer to the SENDIAS webpages: [Bucks SENDIAS service | Buckinghamshire Council](#) and if necessary contact SENDIAS using the [clickable Bucks SENDIAS Contact Form](#)

- Sign up for our email updates

- Live webchat:

Mondays 1-3pm and Fridays 10am- 12 noon

## Important information

In this news update you will find information about:

- New to SEND? - Free FACT Bucks/Bucks SENDIAS Service Webinar - 10-11am on Friday 27 January 2023
- Shout out for SEND - Youth Voice Bucks
- The Prince's Trust Team Programme
- Family Support Service - three exciting projects online and in person for young people in school years 7 and upwards starting in February 2023
- Contact - Welcome to What's new
- Bucks SENDIAS Service Live Web Chat



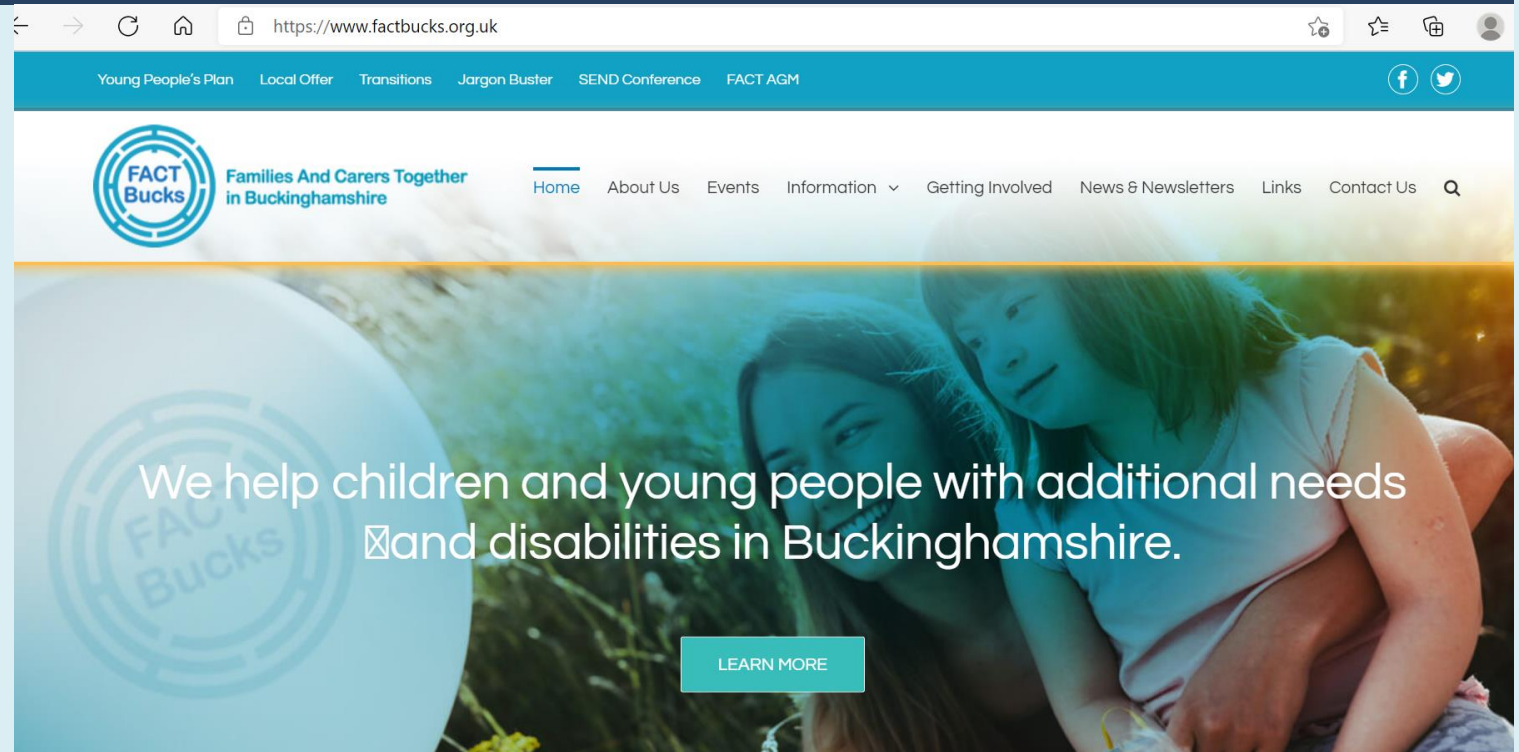
A local voice for parent carers of children with SEND

# FACT Bucks

<https://www.factbucks.org.uk/>

[FACT Bucks | Facebook](#)

[FACT Bucks - Families and Carers Together in Bucks \(@FACTBucks\) / Twitter](#)





**Any Questions?**

# Your feedback please

Please let us know whether you found this webinar useful:

Message us in the chat or use our [\*\*Bucks SENDIAS Contact Form\*\*](#)

**Thank you**