

Appendix I

Baseline Data Maps

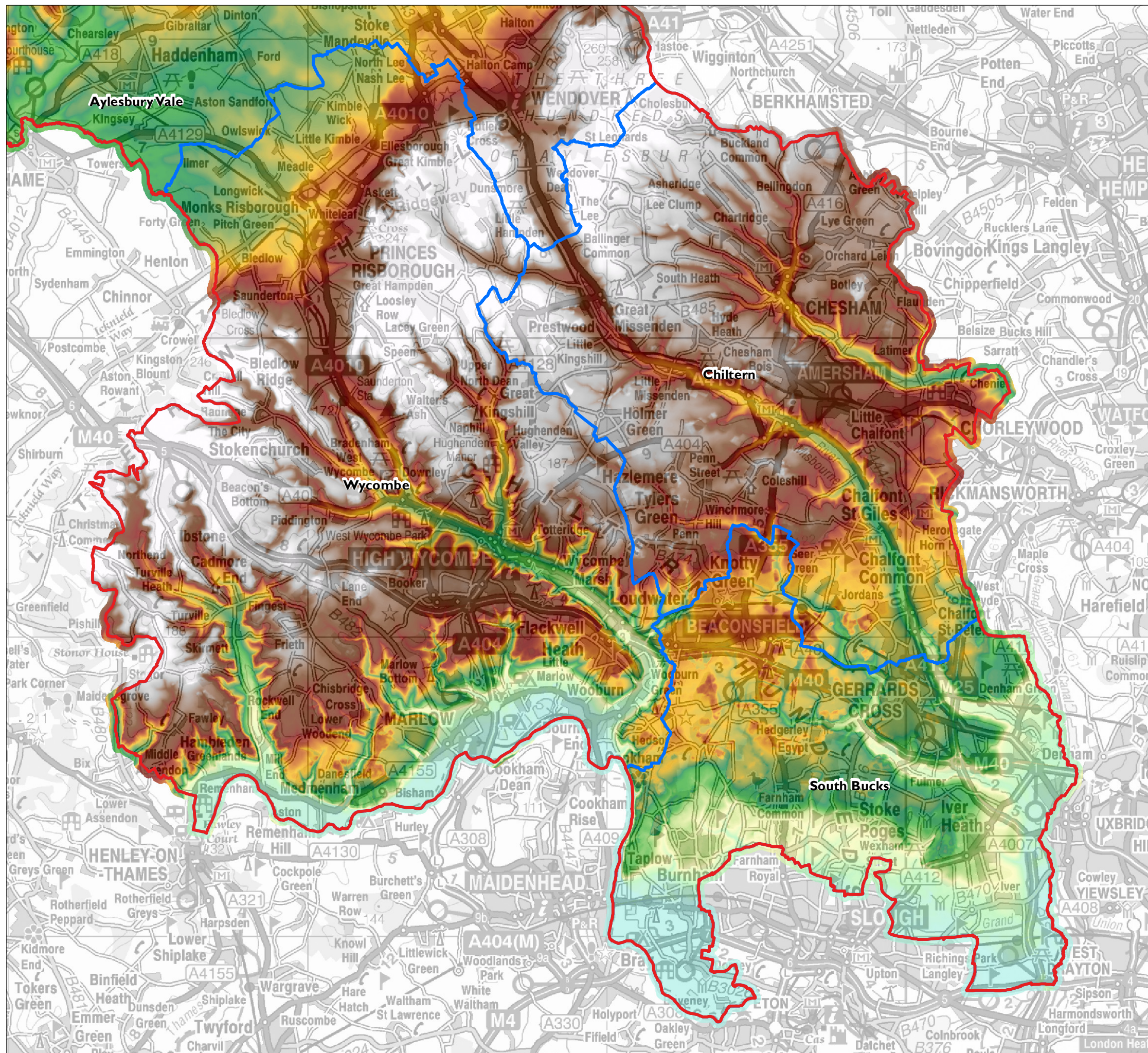
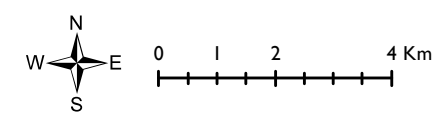
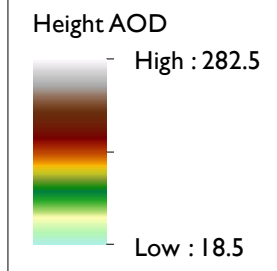


Figure a: Landform

Key

- Buckinghamshire County boundary
- District boundaries



Date: 17/08/2011



Reproduced from Ordnance Survey information with the permission of The Controller of Her Majesty's Stationery Office, Crown Copyright, Land Use Consultants, Licence Number 100019265

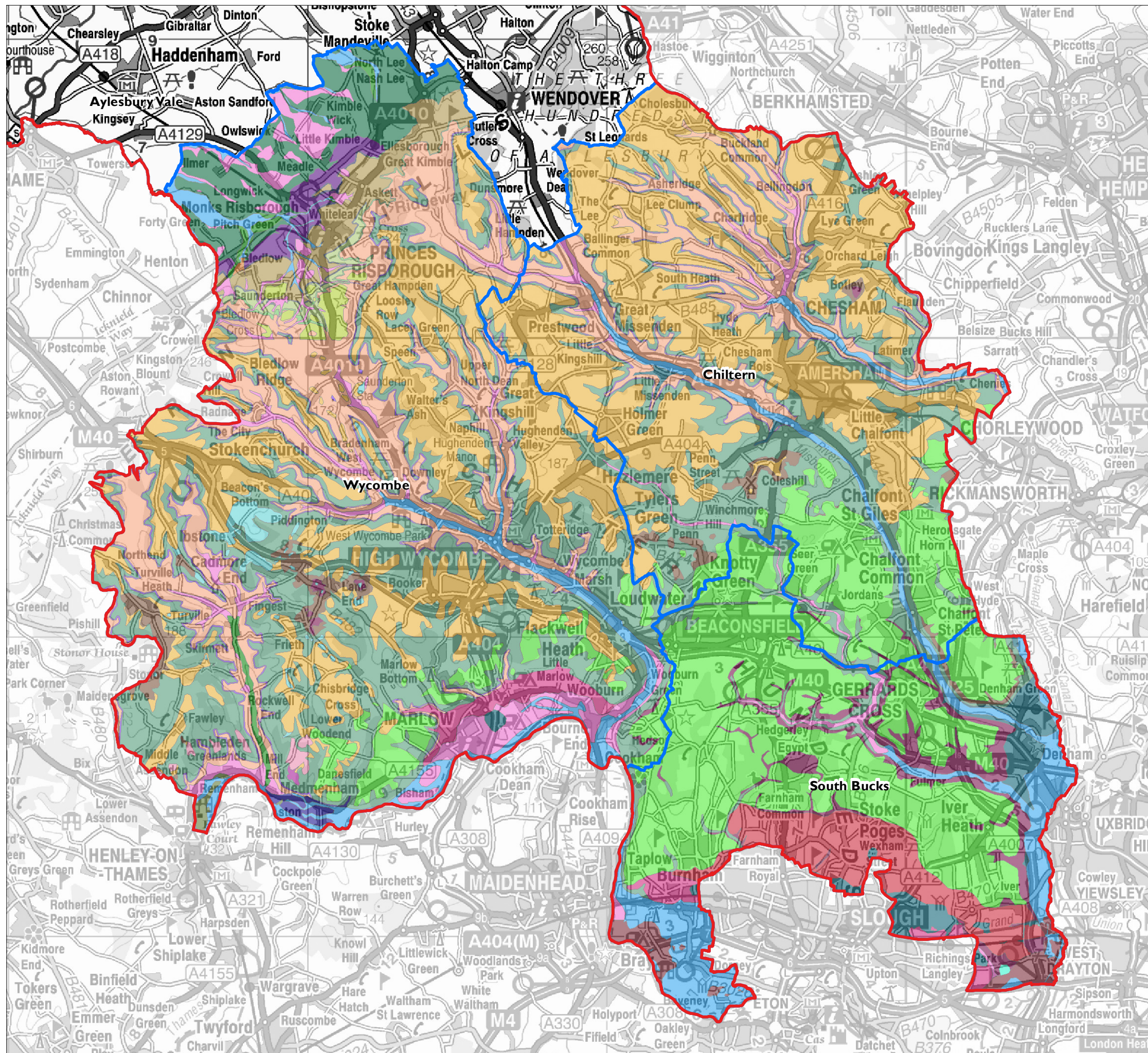
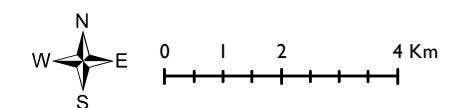


Figure b: Bedrock Geology

Key

- Buckinghamshire County boundary
- District boundaries
- Geology Type**
- Alluvium
- Ancestral Thames River Terrace Deposits
- Boyn Hill Gravel Formation
- Chalk Rock Member
- Clay with Fints
- Gault Formation
- Glauconitic Marl Member
- Head (Undifferentiated)
- Lambeth Group
- Langley Silt Formation
- London Clay Formation
- Melbourn Rock
- Middle Chalk
- Peat
- Princes Risborough Sand and Gravel
- River Terrace Deposits (Undifferentiated)
- River Terrace Deposits I
- River Terrace Deposits IA
- River Terrace Deposits IB
- River Terrace Deposits 7
- River Terrace Deposits 8
- Sand and Gravel
- Shepperton Gravel
- TUFA (Calcareous)
- Taplow Gravel Formation
- Totternhoe Stone Member
- Upper Chalk
- Upper Greensand Formation
- West Melbury Marly Chalk Formation
- Zig Zag Chalk Formation








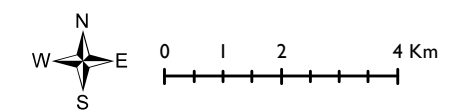
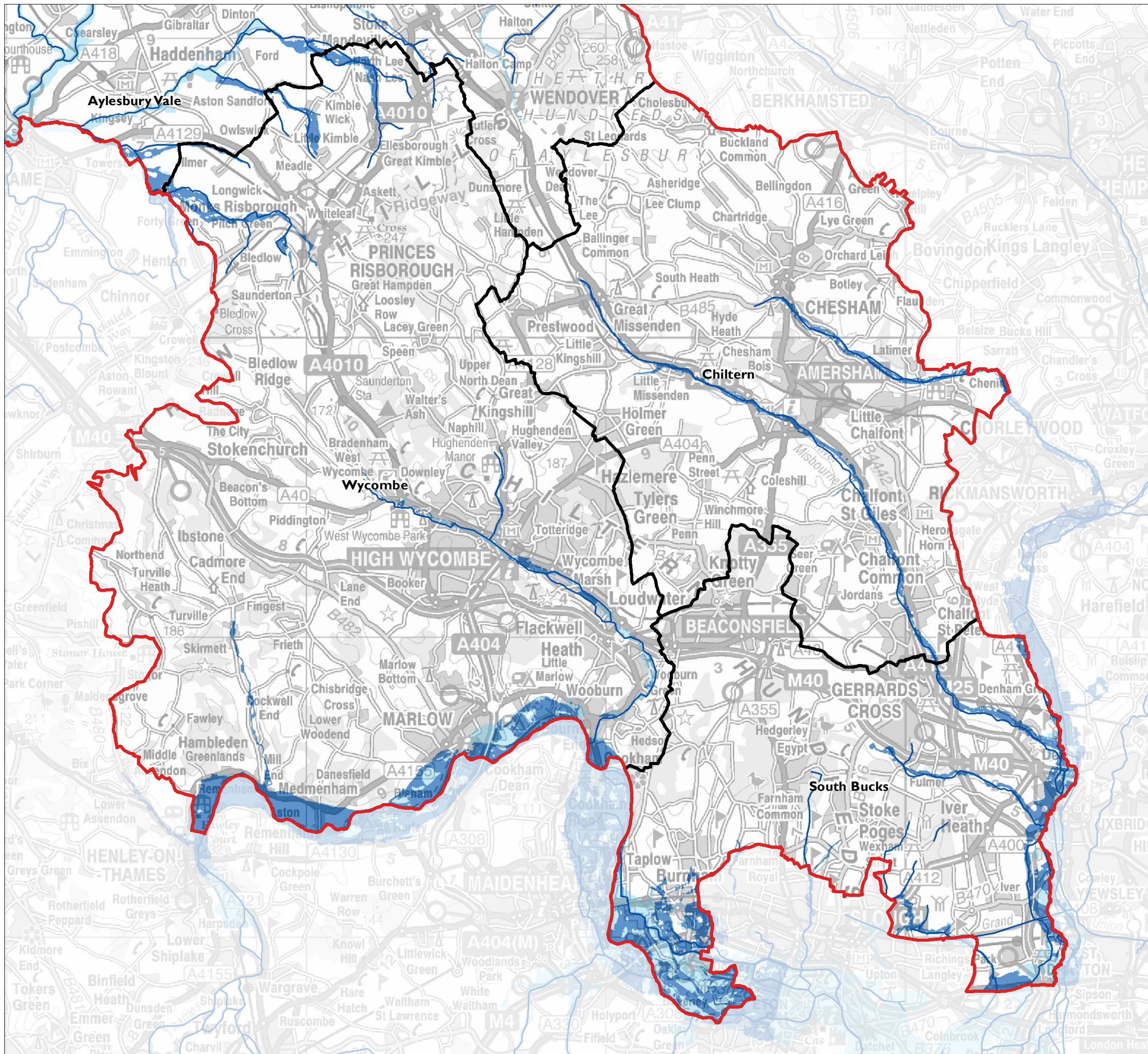
Date: 17/08/2011



Figure c: Hydrology

Key

-  Buckinghamshire County boundary
-  District boundaries
-  Rivers
-  Flood zone 2
-  Flood zone 3



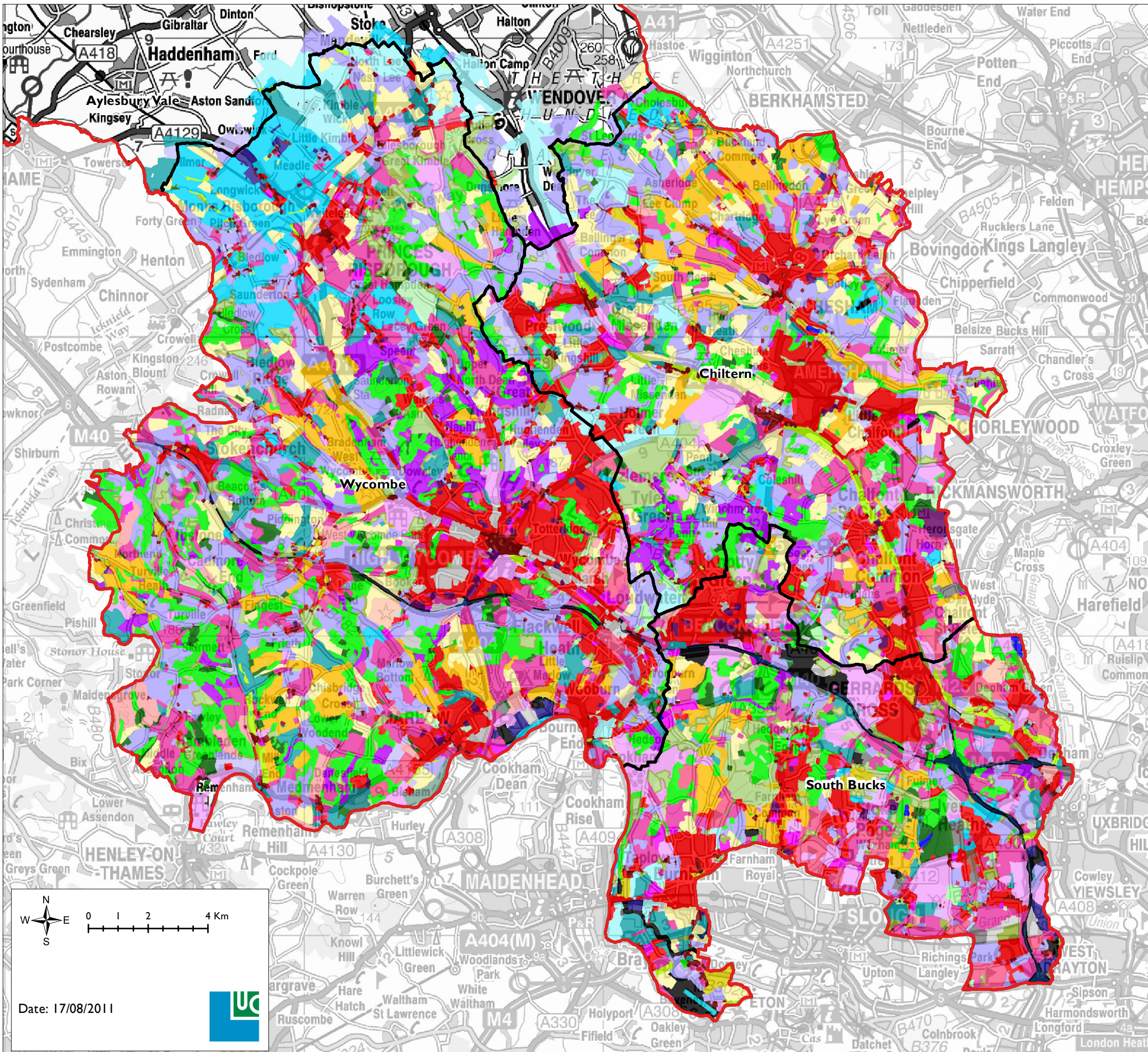
Date: 17/08/2011



Figure d: Historic Landscape Classification

Key

-  Buckinghamshire County boundary
-  District boundaries
-  Airfield (Disused)
-  Allotments
-  Airfields
-  Assarts
-  Greens/Commons
-  Mineral Extraction (Disused)
-  Industrial (Disused)
-  Medieval Deer Park
-  Downland
-  Decoy Pond
-  Enclosure (Pre-18th Century Co-axial)
-  Parliamentary Enclosure (18th - 19th Century)
-  Fossilised Strips
-  Pony Paddocks
-  Enclosure (Pre18th - 18th Century 'Irregular')
-  18th century enclosure
-  Crofts (Medieval/Post Medieval)
-  Enclosure (19th Century)
-  Prairie Field
-  Enclosure (Pre-18th Century Regular)
-  Parliamentary Enclosure (subsequent divisions)
-  Enclosure (20th 21st Century)
-  Pre-18th Century Sinuous
-  Fish Farm/Hatchery
-  Watercress Farming
-  Government and Civic areas
-  Golf Courses
-  Hospitals Schools, Universities
-  Heaths
-  Industrial Disused
-  Industrial (post 1885)
-  Mineral Extraction
-  Flooded Restored Mineral Extraction
-  Mixed Origin
-  Motorways
-  Meadow
-  Nursery with Glasshouses
-  Common Arable (relict elements)
-  Ornamental Lake
-  Military Airfield
-  Military (Post Medieval)
-  Parkland (16th 19th Centuries)
-  Riverine Landscape
- Rowing Lake
- Water Reservoir
- Settlement (Historic Core)
- Shopping/Commercial Centres
- Settlement (Modern)
- Golf Courses
- Recreation (20/21st Century)
- Unimproved /Rough Land
- Utilities
- Woodland (Ancient Semi Natural)
- Coniferous Woodland
- Woodland (Common Woodland/Pasture)
- Orchard
- Woodland (19/20th Century Plantation)
- Woodland (Replanted Ancient)
- Woodland (Secondary 18th - 19th Century)
- wt
- Unknown
- Caravan/Mobile Home Park



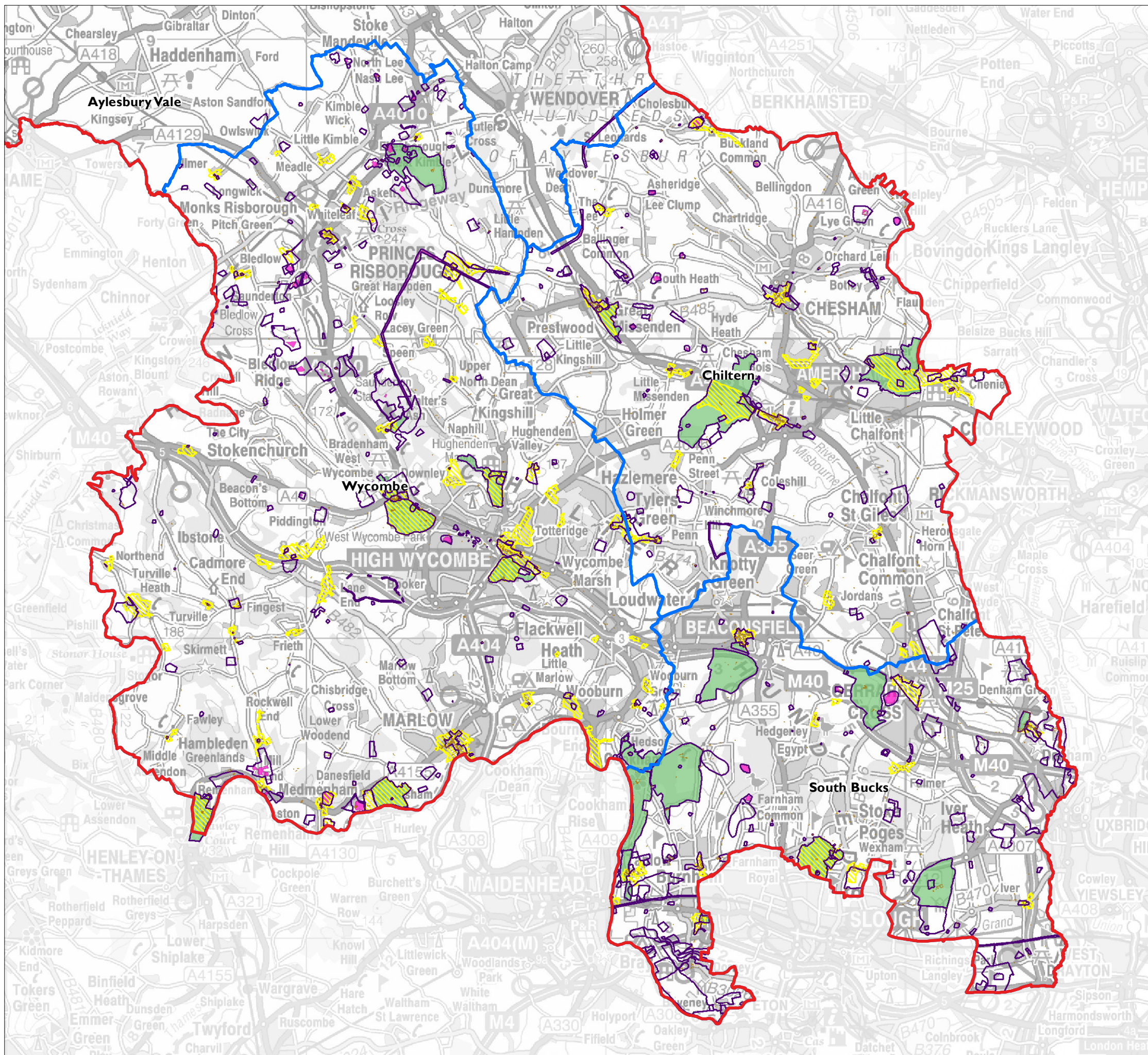
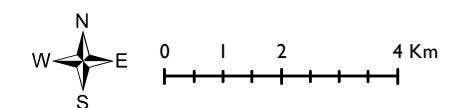


Figure e: Historic Landscape Designations

Key

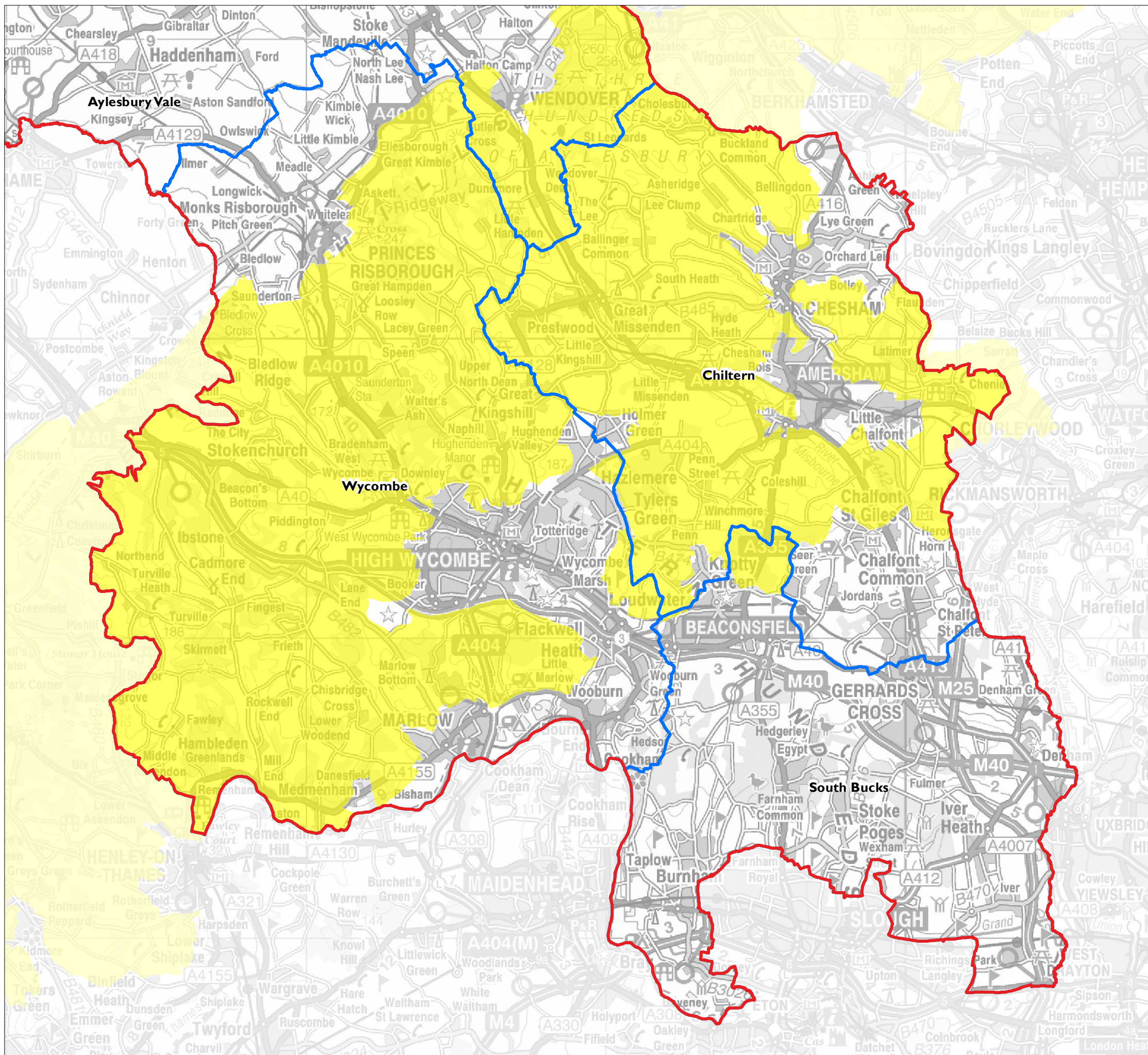
- Buckinghamshire County boundary
- District boundaries
- Listed buildings
- Archaeological notification sites
- Conservation areas
- Scheduled monuments
- Registered parks and gardens






Date: 17/08/2011

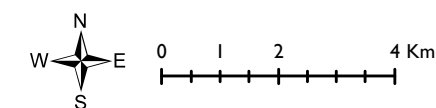


Figure f: Landscape Designations



Key

-  Buckinghamshire County boundary
-  District boundaries
-  Chilterns AONB



Date: 31/10/2011



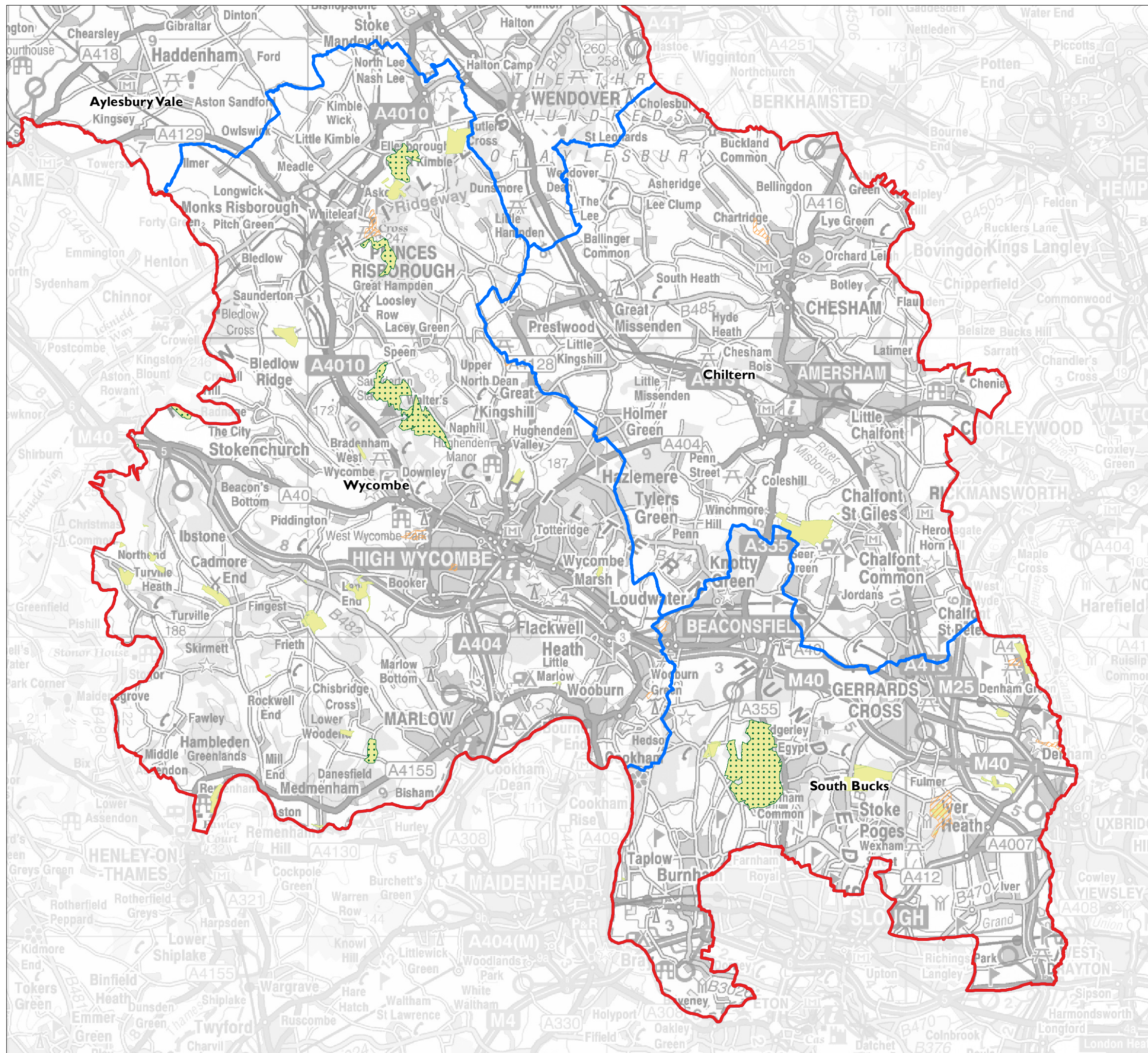





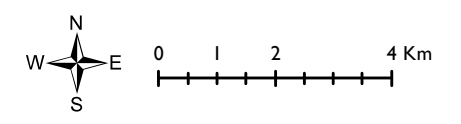


Figure g: Statutory Nature Conservation Designations

Key

-  Buckinghamshire County boundary
-  District boundaries
-  Special Areas of Conservation (SAC)
-  Sites of Special Scientific Interest (SSSI)
-  Local Nature Reserves (LNR)



Date: 17/08/2011



Reproduced from Ordnance Survey information with the permission of The Controller of Her Majesty's Stationery Office, Crown Copyright, Land Use Consultants, Licence Number 100019265

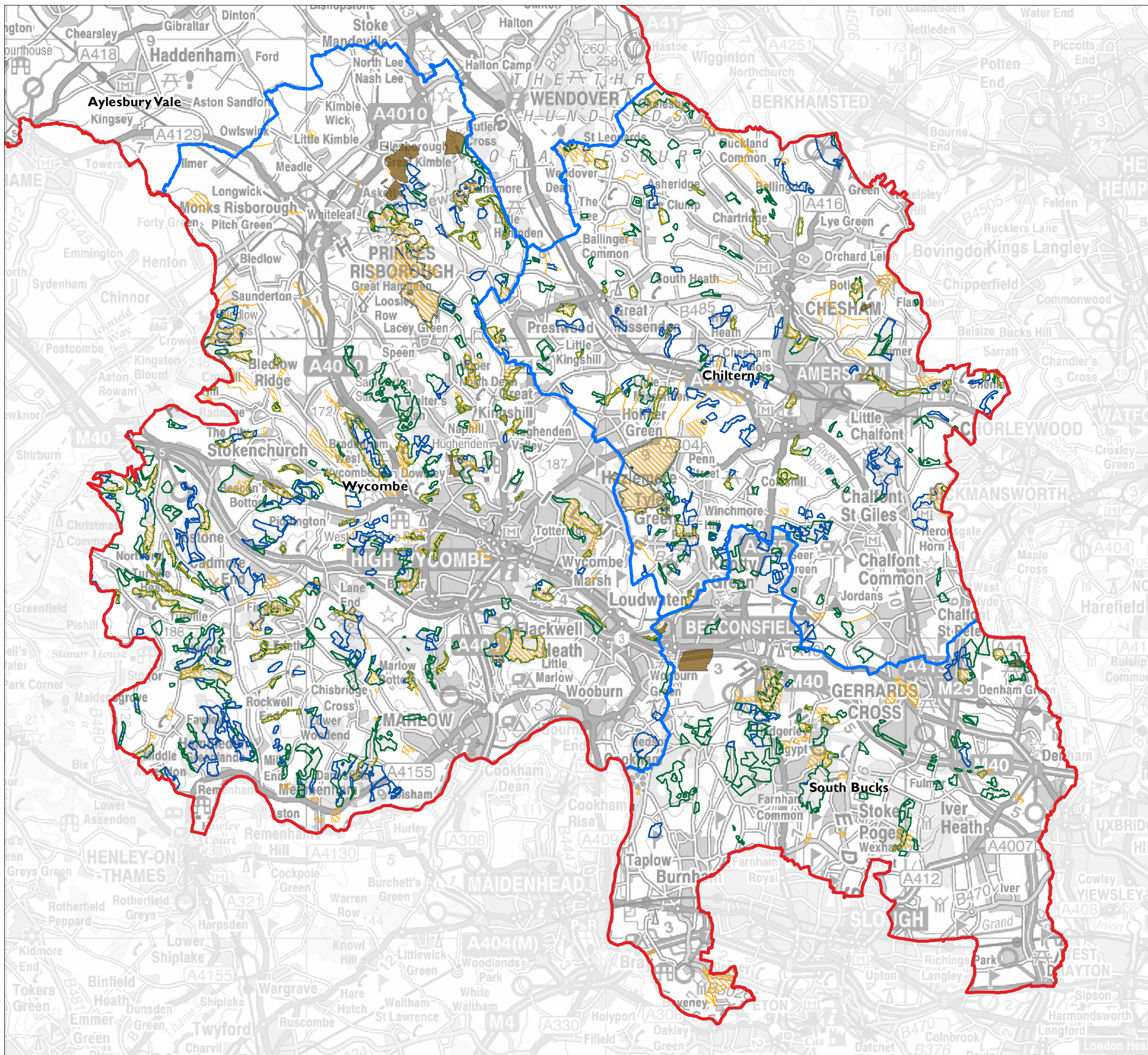






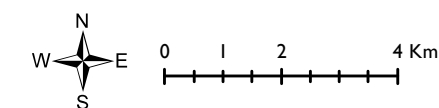


Figure h: Non-Statutory Nature Conservation Designations

Key

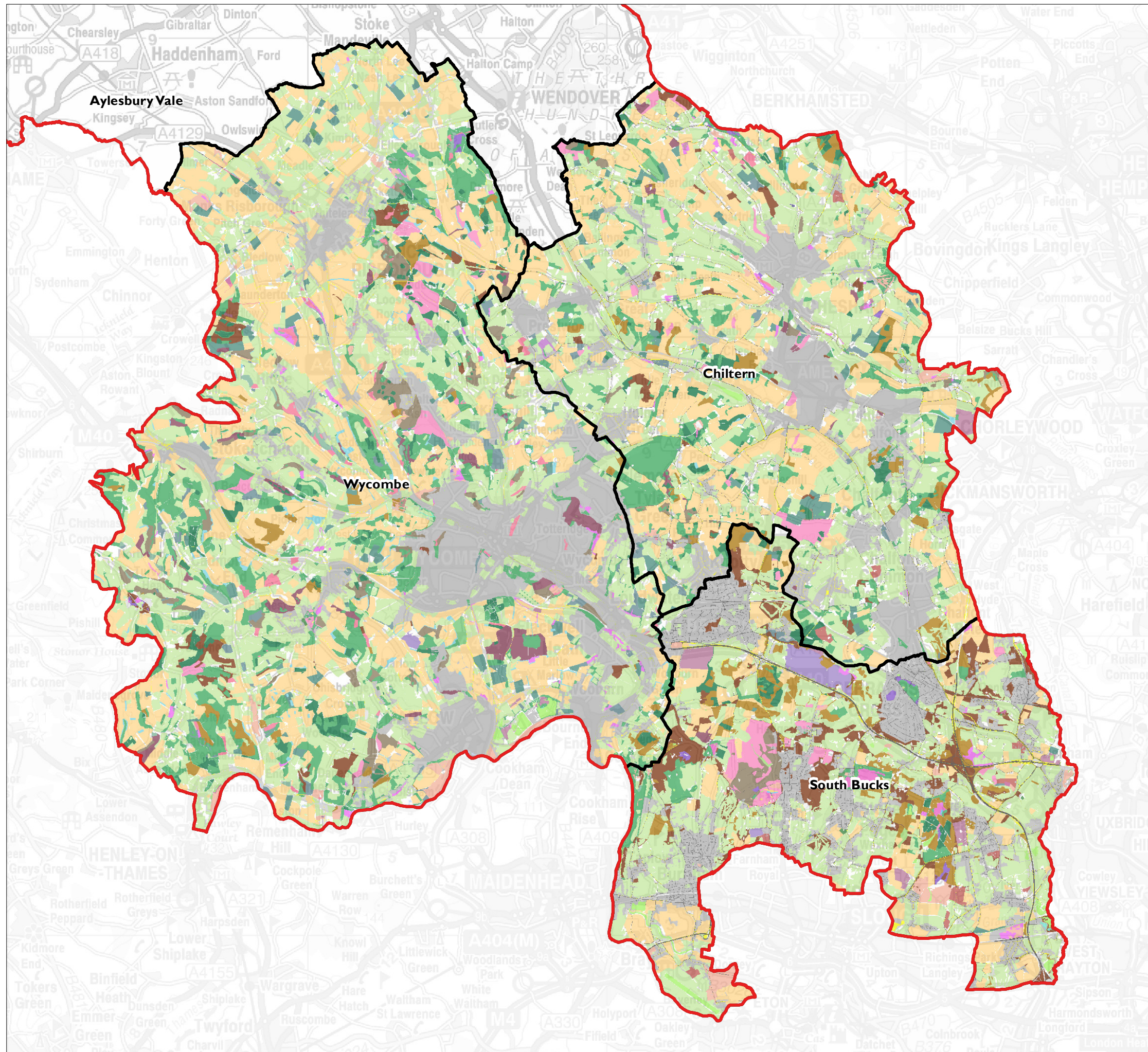
-  Buckinghamshire County boundary
-  District boundaries
-  Local Wildlife Sites
-  Ancient & Semi-Natural Woodland
-  Ancient Replanted Woodland
-  Local Geological Site



Date: 17/08/2011



Figure i: Integrated Habitat Survey

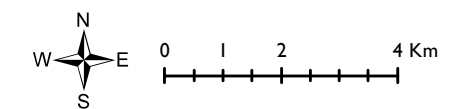


Key

- Buckinghamshire County boundary
- District boundaries

Integrated Habitat Survey

- Acid grassland
- Arable and horticulture
- Arable headland or uncultivated strip
- Beech and yew woodlands
- Bracken
- Broadleaved woodland
- Broadleaved, mixed, and yew woodland
- Built-up areas and gardens
- Calcareous grassland
- Cereal crops
- Chalk headwaters
- Chalk rivers (not including chalk headwaters)
- Coniferous woodland
- Dwarf shrub heath
- Eutrophic standing waters: general
- Fen, marsh and swamp
- Fens [lowland]
- Freshly ploughed
- Grassland, possibly unimproved
- Grassland, probably improved
- Improved grassland
- Intensively managed orchards
- Lowland beech and yew woodland
- Lowland calcareous grassland
- Lowland dry acid grassland
- Lowland meadows
- Lowland mixed deciduous woodland
- Mesotrophic standing waters
- Mixed woodland
- Neutral grassland
- Non-cereal crops including woody crops
- Other beech and yew woodlands
- Other natural rock exposure feature
- Purple moor grass and rush pastures [Molinia-Juncus]
- Quarry
- Reedbeds
- Refuse tip
- Rivers and streams
- Scrub woodland
- Standing open water and canals
- Transport corridor associated verges only
- Transport corridors
- Unknown terrestrial vegetation
- Vineyards
- Wet heaths
- Wet woodland
- Whole field fallow




Date: 19/09/2011



Figure j: Tranquillity Mapping

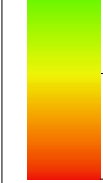
Key

 Buckinghamshire County boundary

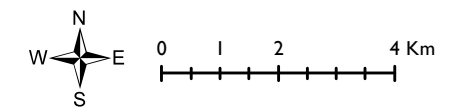
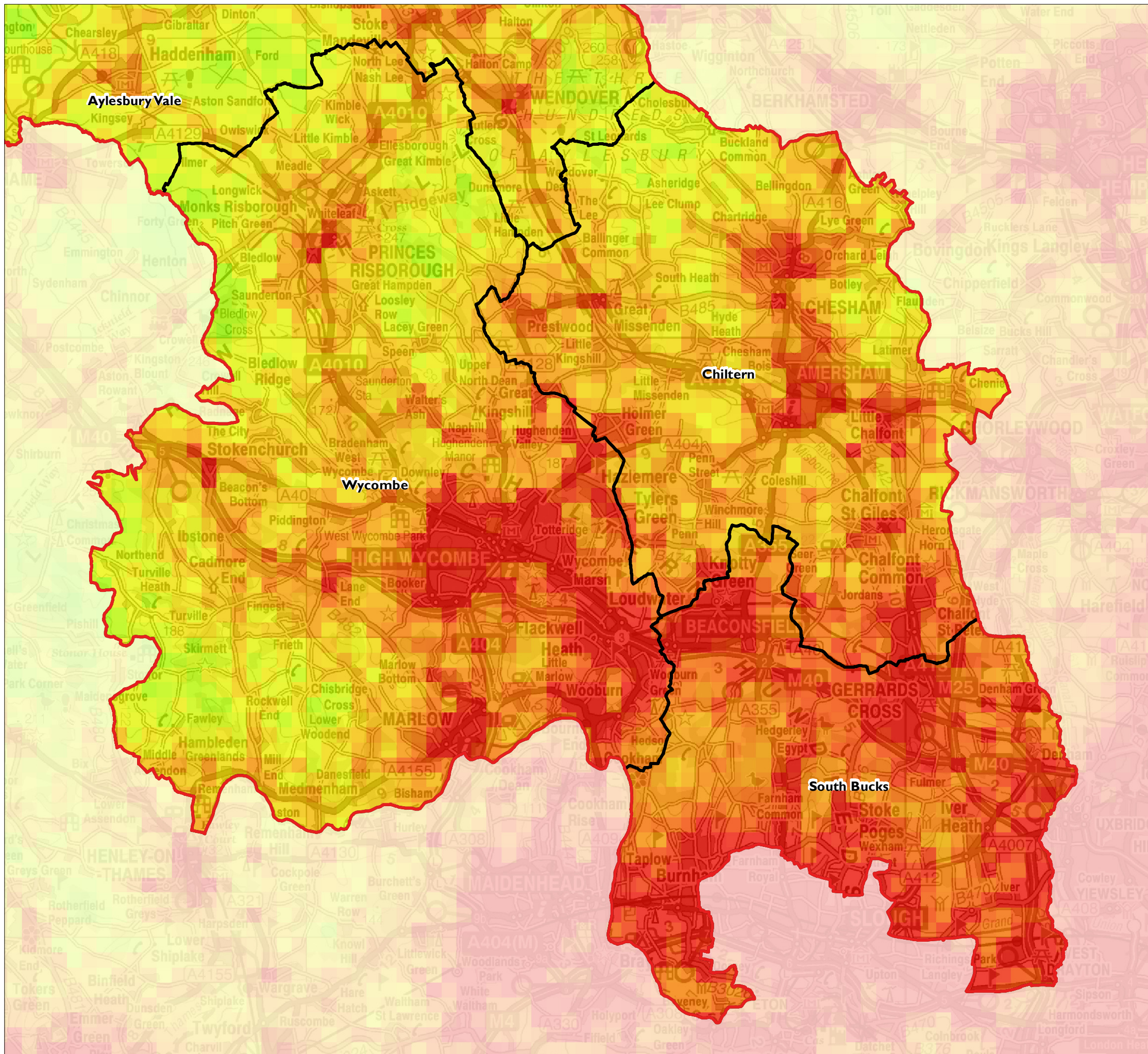
 District boundaries

CPRE Tranquillity Mapping

 Most tranquil



Least tranquil



Date: 19/09/2011

