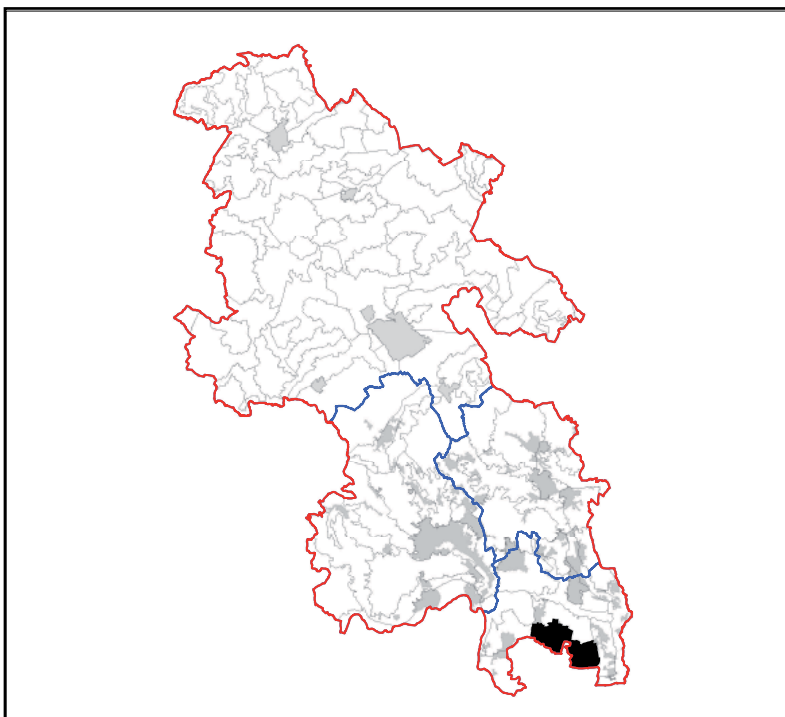


## LCT 25 LOWLAND FRINGE

### Constituent LCAs

LCA 25.1     Stoke & Langely Park





### KEY CHARACTERISTICS

- Flat lowland topography, predominately underlain by gravel formations.
- A mixed use and highly settled landscape, with interspersed areas of farmland, such as rough grazing and paddocks.
- Parkland landscape provides important historical, ecological and recreational value, and a distinctive rural character, within an otherwise busy landscape.
- Sparse tree cover, which is limited to parkland landscapes, such as Langley Park and Stoke Park.
- Low lying topography allows for extensive views across open fields.
- Settlement, roads, and golf courses fragment the landscape, creating a busy character, with high levels of movement. Parkland landscapes introduce a sense of tranquillity.