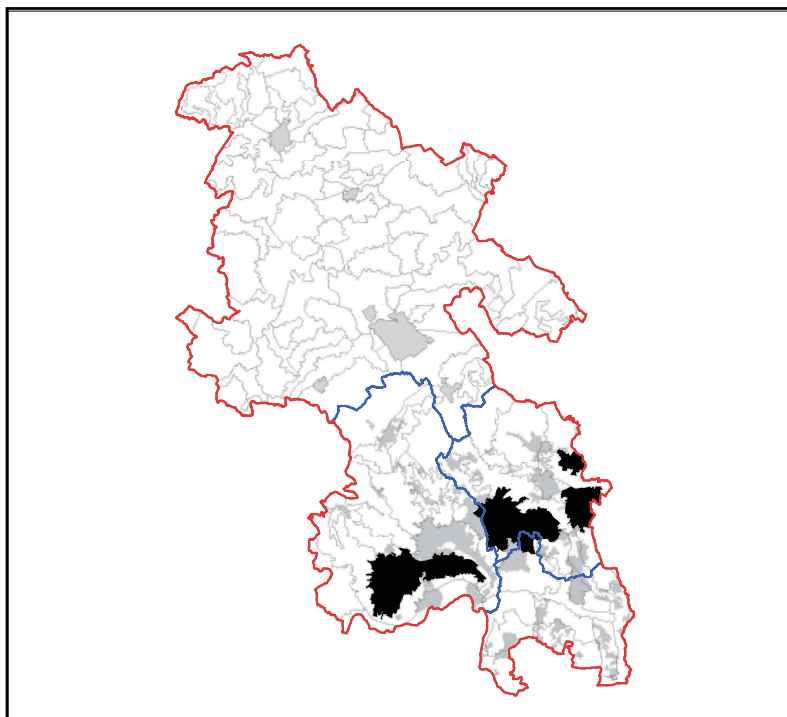


## LCT 18 ROLLING FARMLAND

### Constituent LCAs

LCA 18.1	Great Marlow
LCA 18.2	Penn
LCA 18.3	Little Chalfont
LCA 18.4	Codmore





## LCT 18 ROLLING FARMLAND

### KEY CHARACTERISTICS

- Large scale landscape with rolling topography informed by a varied geology, including chalk and clay with flints, and River Terrace Deposits.
- Predominately arable fields delineated by an intact network of hedgerows. Smaller fields of rough grazing, pasture and paddock are interspersed with areas of woodland.
- Often a dense and mature woodland character with large blocks broadleaved, mixed and coniferous woodland, and including ancient woodland.
- Typically low density, dispersed settlement comprising small hamlets/villages and individual farmsteads. Distinctive materials including, red brick, brick and flint, and black washed wooden cladding.
- Varying levels of enclosure, with open fields contrasting with dense woodland cover. Woodland often forms the backdrop to many vistas. Some long views across open farmland.
- Small winding rural roads and lanes with little traffic and an intimate character. A small number of footpaths, offering recreational access to woodland
- Sweeping topography and farmland land cover with limited settlement contributes to a well balanced and uniform landscape.
- Overall a remote and tranquil character prevails, with a strong sense of rural identity.





# LCA 18.2 PENN ROLLING FARMLAND

