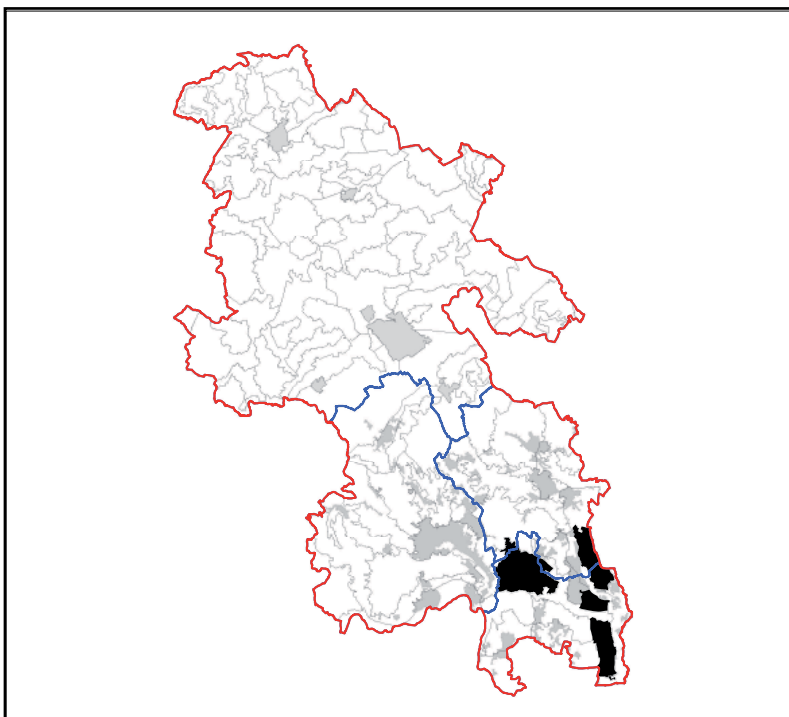


## LCT 22 MIXED USE TERRACE

### Constituent LCAs

|          |                   |
|----------|-------------------|
| LCA 22.1 | Beaconsfield      |
| LCA 22.2 | Chalfont St Peter |
| LCA 22.3 | Tatling End       |
| LCA 22.4 | Iver Heath        |



## LCT 22 MIXED USE TERRACE

### KEY CHARACTERISTICS

- Elevated landscape predominately underlain by river terrace deposits, which often gives rise to slowly permeable, loamy/clayey soils.
- A mosaic of land cover and land uses create a varied landscape. Farmland predominates, with a mix of arable, pasture, rough grazing and some areas of paddock.
- Woodland blocks and smaller wooded areas are interspersed across the landscape, providing enclosure and contrast to the more open landscape which predominates.
- Relatively low settlement density, with small villages/hamlets and scattered farmsteads. The landscape is cut by busy roads creating local audible and visual impacts and fragmenting the landscape.
- Land use is varied often including industrial and business areas, major transport systems, parkland and settlement, which all contribute to the mixed and sometimes disparate landscape.
- Small pockets of tranquillity exist away from roads and built up areas.
- Occasional long views across open fields and over lower adjacent landscapes.