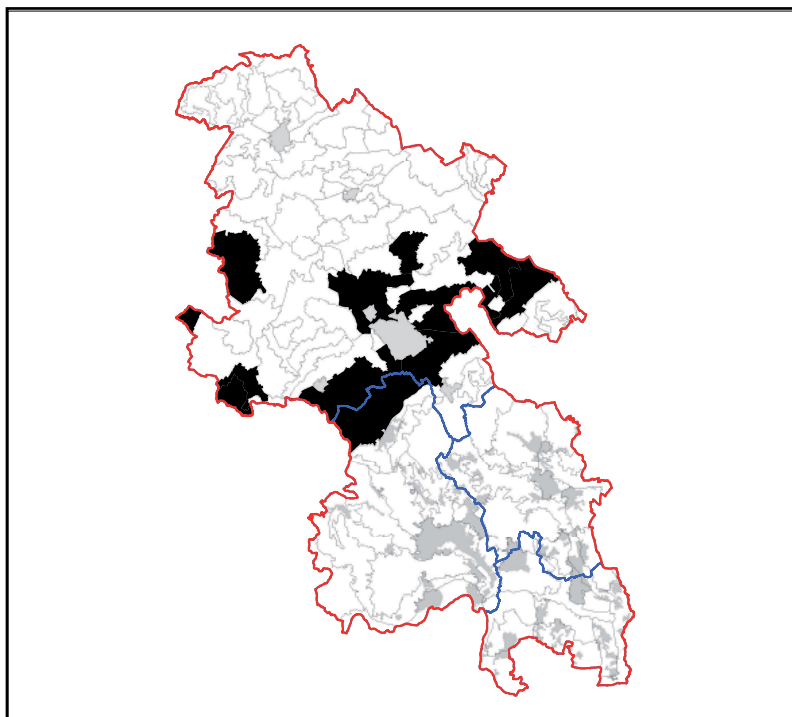


LCT 8 VALE

Constituent LCAs

LCA 8.13 Longwick



KEY CHARACTERISTICS

- Flat and gently undulating low lying topography, largely composed of Gault Clay Formation. Easily viewed from adjacent landscapes, particularly the elevated chalk escarpment.
- Open and expansive arable fields, with a mosaic of smaller scale paddock and pasture fields interspersed.
- Linear belts of Poplar trees act as shelter belts and are frequently found close to farmsteads.
- A low density and dispersed settlement pattern comprising scattered farmsteads and small hamlets.
- Parliamentary field enclosures create a strong geometric landscape pattern accentuated by a network of dense hedgerows. A strongly uniform and simple landscape character.
- Rural roads and smaller winding lanes, bordered by rough grass verges and tall hedgerows. Ditches occasionally run along road sides.
- A dense network of public footpaths and bridleways, including long distance footpaths.
- Long views across open fields to a wooded or open skyline, with important views stretching towards the Chiltern escarpment.
- Sense of tranquillity and calm, and an overall rural character.

