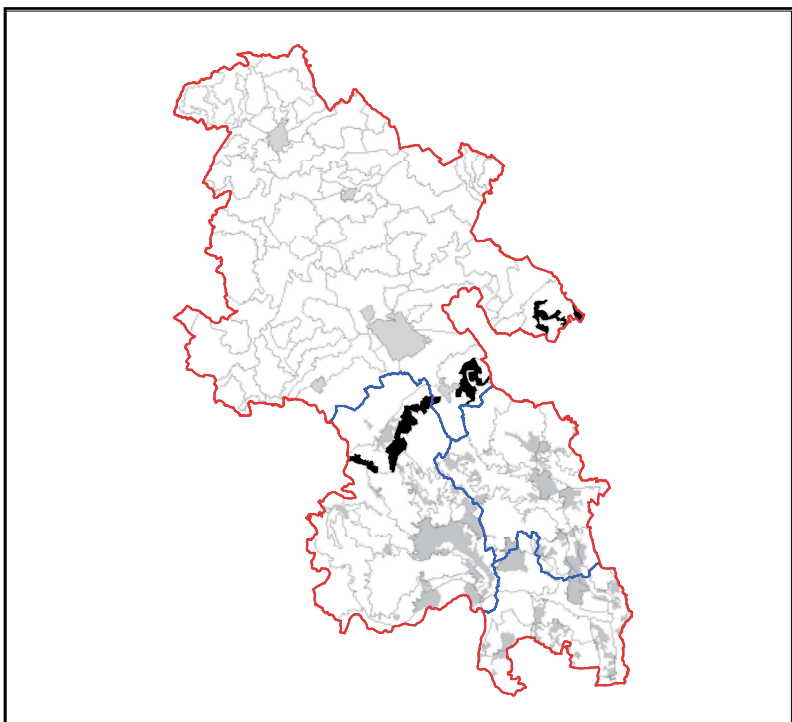


## LCT 11 CHALK ESCARPMENT

### Constituent LCAs

LCA 11.2     Wain Hill  
LCA 11.3     Coombe Hill & Whiteleaf



## LCT 11 CHALK ESCARPMENT

### KEY CHARACTERISTICS

- Steep chalk escarpment. A visible feature over long distances from lower lying areas in Aylesbury Vale.
- Lower slopes are undulating, comprising open farmland, which contrast with the well wooded scarp tops.
- Field systems often have a strong geometric character, and are typically modern enclosures (20<sup>th</sup> century and parliamentary enclosure).
- Broadleaved, mixed, yew and scrub woodland interspersed with open patches of calcareous grassland. Numerous associated ecological designations, including SSSIs.
- Low density of settlement, limited to lower slopes, largely comprising isolated properties and individual farmsteads.
- Rich variety of historic and archaeological remains, including distinctive local landmarks and scheduled monuments, such as barrows, moated sites and cross dykes.
- Comprehensive rights of way network, particularly through woodland and including long distance footpaths.
- Varying degrees of enclosure, with well wooded scarp tops contrasting with open farmland. Extensive long views, over low lying land (e.g. the Vale of Aylesbury).
- Intimate and calm landscape, with little movement or overt human influence, which generates high levels of tranquillity.