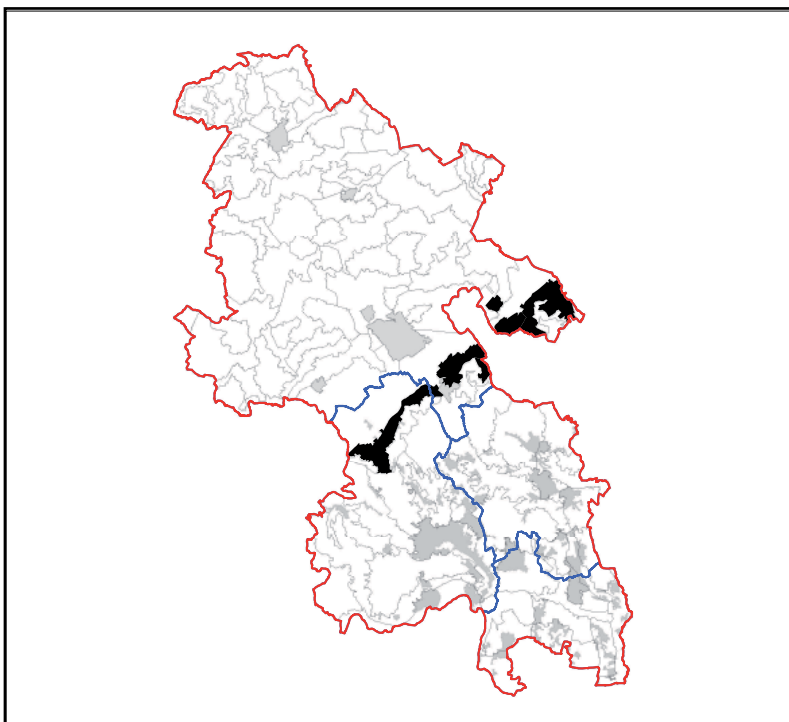


## LCT 10 CHALK FOOTHILLS

### Constituent LCAs

LCA 10.6    Risborough





## LCT 10 CHALK FOOTHILLS

### KEY CHARACTERISTICS

- The foothills of the chalk escarpment. Located on lower lying ground at the base of the escarpment.
- Farmland dominates with large regular fields, bounded typically by a network of hedgerows with scattered trees.
- Tree cover is limited within this landscape.
- Settlement is prominent within the landscape, nestled at the foot of the escarpment, with a historic character, and modern infilling. Smaller linear settlements occur along roads.
- A significant number of archaeological remnants distributed across the landscape, including several scheduled ancient monuments, such as barrows, moated sites and earth works.
- Several busy roads run parallel to the scarp, with a network of rural roads transecting these and connecting settlement. Several long distance footpaths pass through this landscape.
- Open fields and sloping landform allows for long views to and from the foothills across the lower lying vale.
- Roads and settlement creates local audible and visual impact, however, away from these features pockets of tranquillity exist and a rural character prevails.

