

IMPACT OF OBESITY

What are some of the **PSYCHOLOGICAL** consequences for adults living with obesity?



POOR QUALITY OF LIFE

Obesity can negatively impact an individual's QOL. Obesity has been associated with an increased risk of poorer perceived health.⁶



DEPRESSION

Adults living with obesity are at a higher risk of either current or lifetime depression than their healthy weight counterparts.² Obese adults are 33% more likely to experience depression.⁶



ANXIETY

The most common anxiety disorder amongst adults living with obesity is social anxiety, found in 9% of individuals.⁷



REDUCED SELF-ESTEEM

Adults living with obesity are more likely to be dissatisfied with their body shape. Living with obesity has been found to significantly reduce self-esteem.⁵



EATING DISORDERS

Disordered eating behaviours such as binge-eating disorder and night eating syndrome are commonly reported among adults living with obesity.²



DISCRIMINATION & STIGMATISATION

Adults living with obesity are frequently subjected to discrimination in numerous settings including educational, employment and even health care settings.⁷ Adults living with obesity have reported being discriminated against through education, income, the chance of marriage and employment.²



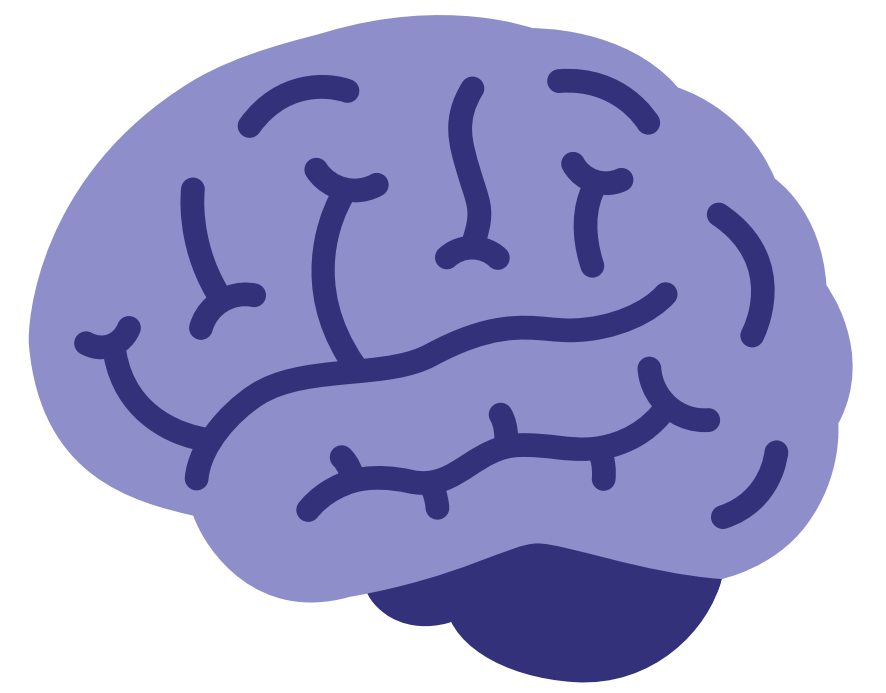
SOCIAL ISOLATION

Living with obesity can have a significant effect on an individual's social life and competence leaving them to feel isolated and vulnerable.⁵

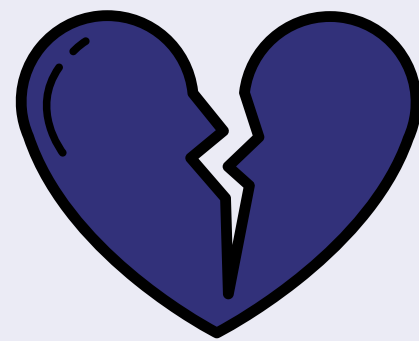


IMPACT OF OBESITY FOR CHILDREN

What are some of the **PSYCHOLOGICAL** consequences for children living with obesity?



POOR QUALITY OF LIFE



Obesity in childhood has been consistently associated with poorer health-related QOL when compared to healthy weight children.¹

REDUCED SELF-ESTEEM

Children with obesity demonstrate significantly lower self-esteem than healthy weight peers. Obese children also display lower perceived self-worth.¹



ANXIETY

Many children with obesity suffer heavily from anxiety due to decreased self-esteem and problems with body image.¹



EMOTIONAL & BEHAVIOURAL DISORDERS

Children living with obesity are twice as likely to have an ADHD diagnosis than their healthy weight peers.³



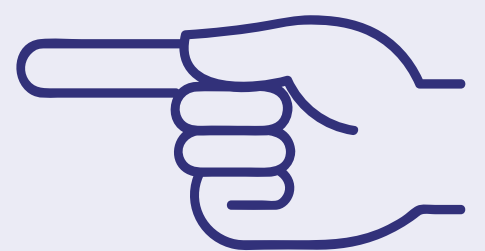
DEPRESSION

Compared to healthy weight children, children living with obesity are found to be significantly more likely to experience depression.¹



DISCRIMINATION & STIGMATISATION

Children living with obesity between the ages of 6 and 13 years are 4-8 times more likely to be teased and bullied than their healthy weight peers. Between a quarter and a third of teenagers report being teased for weight related reasons.⁵



BODY DISSATISFACTION

Children living with obesity are likely to experience higher rates of body dissatisfaction, often impacting other life domains.²



REFERENCES

1. Rankin J, Matthews L, Cobley S, Han A, Sanders R, Wiltshire H, Baker J. Psychological consequences of childhood obesity: psychiatric comorbidity and prevention. *Adolescent Health, Medicine and Therapeutics*. 2016;7(1):125-46.
2. Chu D, Minh-Nguyet N, Nga V, Thai-Lien N, Vo D, Lien N, Nhu-Ngoc V, Son L, Le D, Nga V, Van-Tu P, Van-To T, Ha L, Tao Y, Pham V. An update on obesity: Mental consequences and psychological interventions. *Diabetes and Metabolic Syndrome: Clinical Research and Reviews*. 2019;13(1):155-60.
3. Pulgaron E. Childhood Obesity: A Review of Increased Risk for Physical and Psychological Co-morbidities. *Clinical Therapy*. 2013;35(1):18-32.
4. Erhart M, Herpertz-Dahlmann B, Wille N, Sawitzky-Rose B, Holling H, Ravens-Sieberer U. Examining the relationship between attention-deficit/hyperactivity disorder and overweight in children and adolescents. *European Child and Adolescent Psychiatry*. 2012;21(1):39-49.
5. National Obesity Observatory. 2011. Obesity and Mental Health. [Online], Available from: <<https://www.mindcharity.co.uk/wp-content/uploads/2016/03/Obesity-and-Mental-Health.pdf>> [Accessed 10 March 2020].
6. Rajan T, Menon V. Psychiatric disorders and obesity: A review of association studies. *Journal of Postgraduate Medicine*. 2017;63(3):182-90.
7. Sarwer D, Polonsky H. The Psychosocial Burden of Obesity. *Endocrinology and Metabolism Clinics of North America*. 2018;45(3):677-88.